

# New European Bauhaus Academy Alliance

Education, Training & Skills

**LIFE BE-WoodEN Final Conference**  
**Tackling embodied carbon through wooden construction**

The role of bio-based materials and the New European Bauhaus in building greener futures

Brussels, December 3, 2025

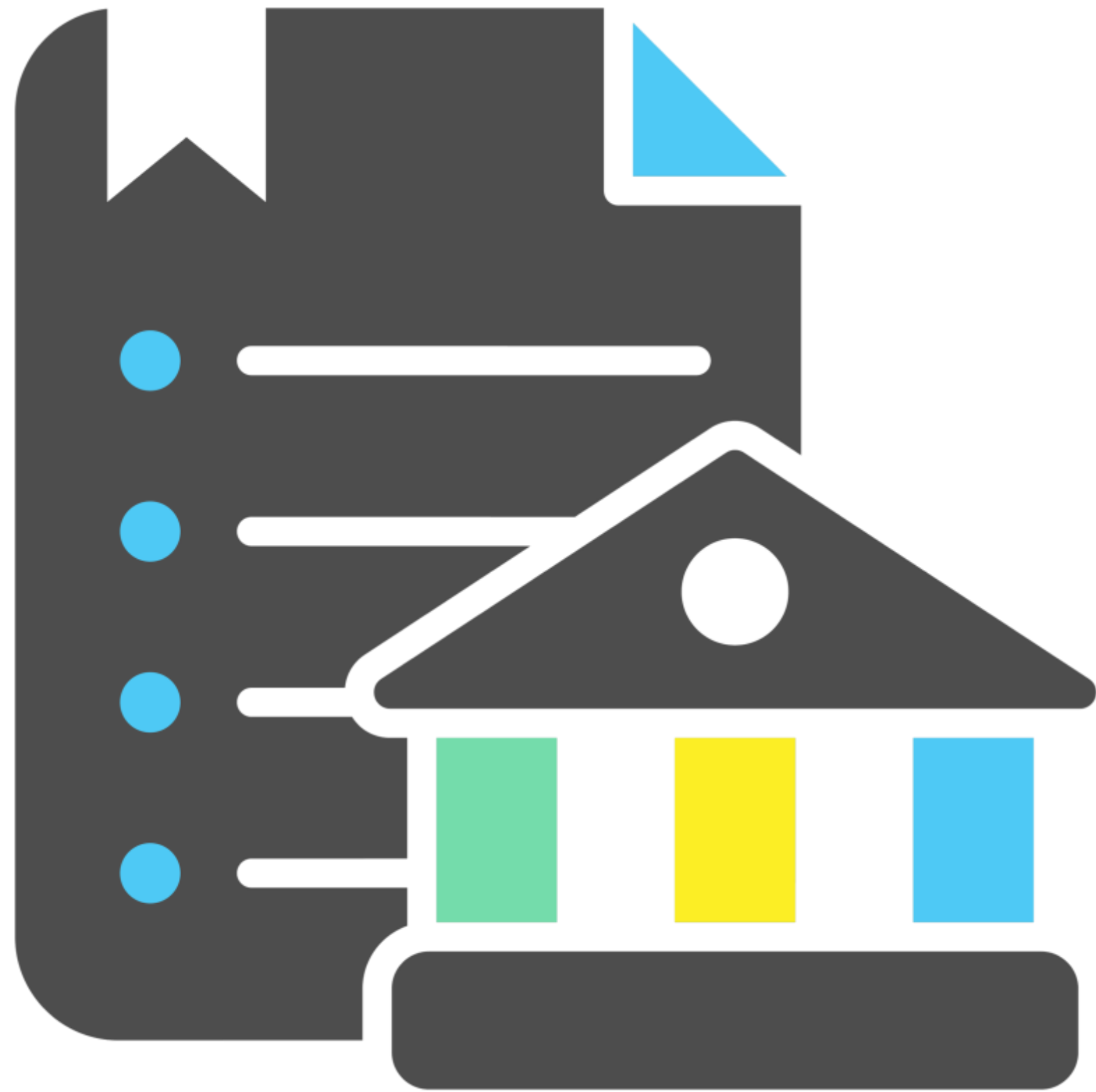
**Andreja Kutnar**



**Circular  
Bio-based  
Europe**  
Joint Undertaking



3,000,000



Do we have enough skills?

Do we have the knowledge?



New  
European  
Bauhaus  
Academy

# New European Bauhaus Academy Alliance

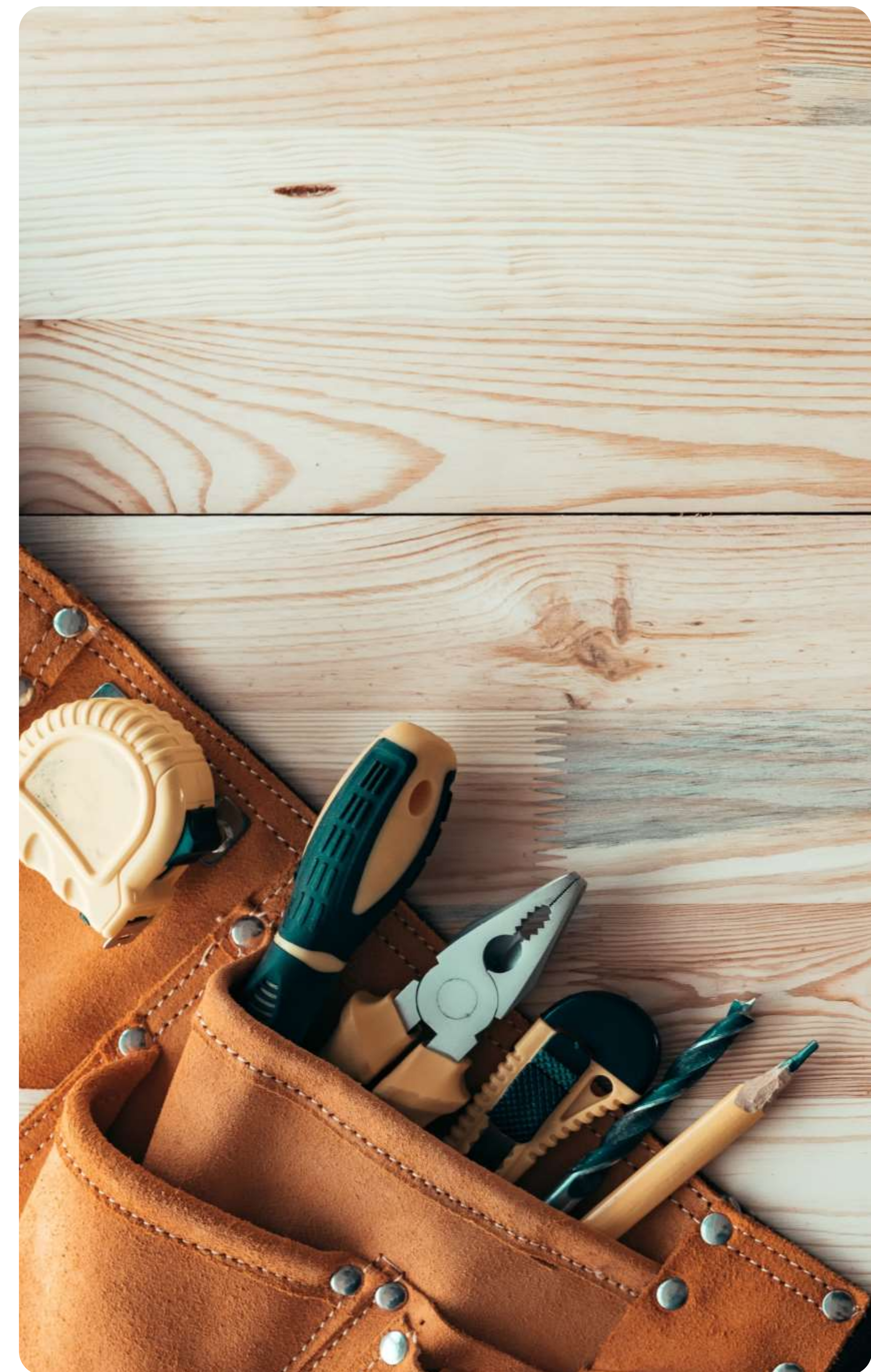


Co-funded by  
the European Union



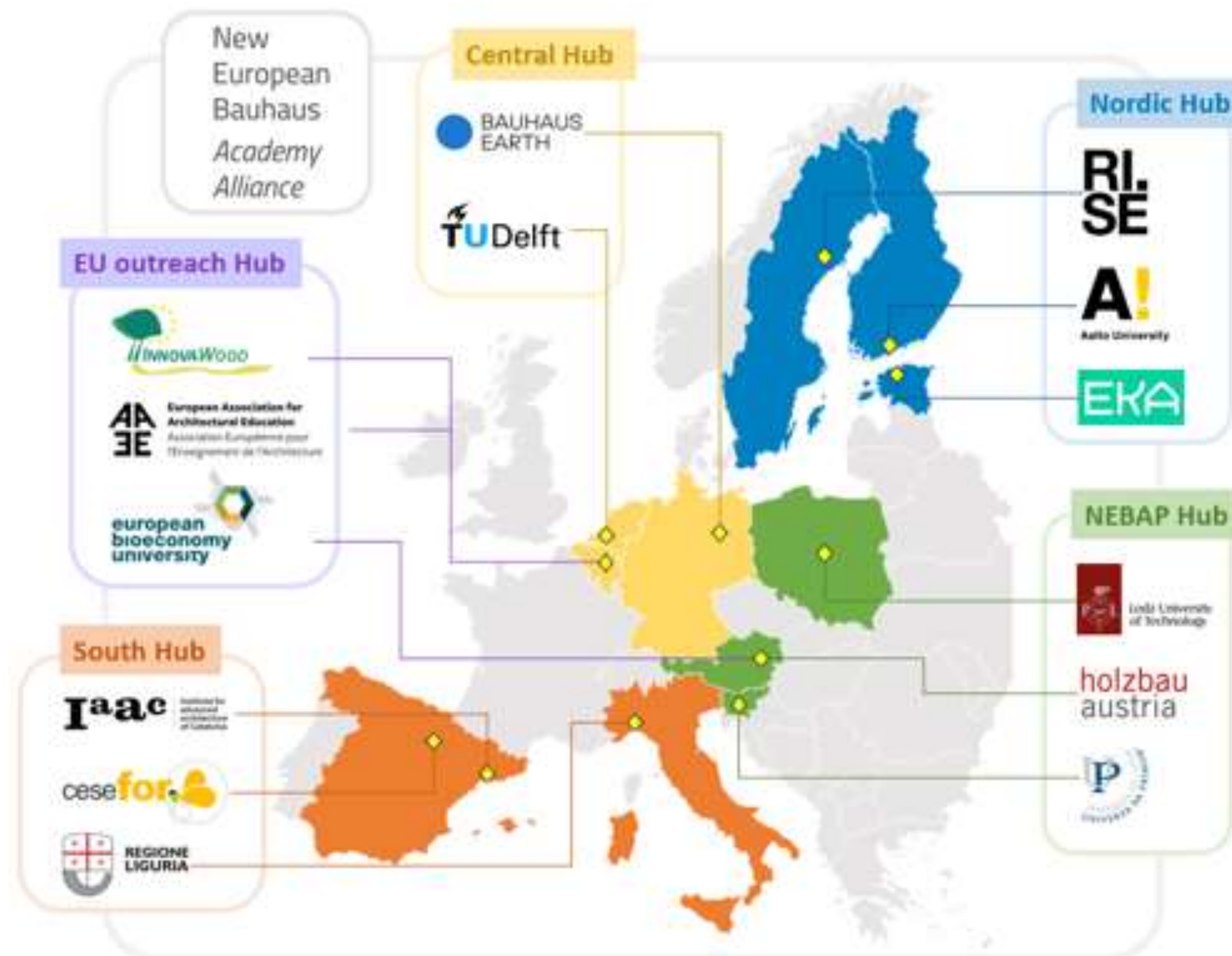


# Making the Academy – Co-Design





# Establishing NEB Academy Hubs through out Europe





# NEBA Hubs

The **Memorandums of Understanding (MoU)** has been agreed upon by the founding partners of each:

- NEBAP Hub (UP, TUL, Holzbau)
- NEBA Central Hub (BE, Technical University Berlin (TUB), Technical University for Sustainable Development (HNEE), UP)
- NEBA South Hub (IAAC, Cesefor, Liguria, UP)
- NEBA North Hub (RISE, Aalto, EKA, UP)
- NEBA Outreach Hub (IW, EAAE, EBU, UP)





# NEB Academy Mission

**NEB Academy's mission is to train, upskill, and reskill the construction ecosystem to achieve a carbon neutral building sector and a beautiful, sustainable, and inclusive transformation of the built environment.**

## Vision in 2 years

With support of the NEBA Alliance project, the NEB Academy has established a self-sustainable and recognised pan-European training ecosystem of NEBA Hubs and pilot training activities.

## Vision in 5 years

The NEB Academy offers micro-credentials and other training formats that are transferable across Europe in certain professions within the construction ecosystem to maintain the current knowledge and to upskill workers while shaping the skills policies of the European Union.

## Vision in 10 years

The NEB Academy is acknowledged internationally and shapes the policies of the European Union and beyond by offering high quality trainings on a broad scale.



Who is the  
academy for?

# TARGET GROUPS

TG1

**Education, training, and academia.**

TG3

**Public bodies and policy makers**

TG2

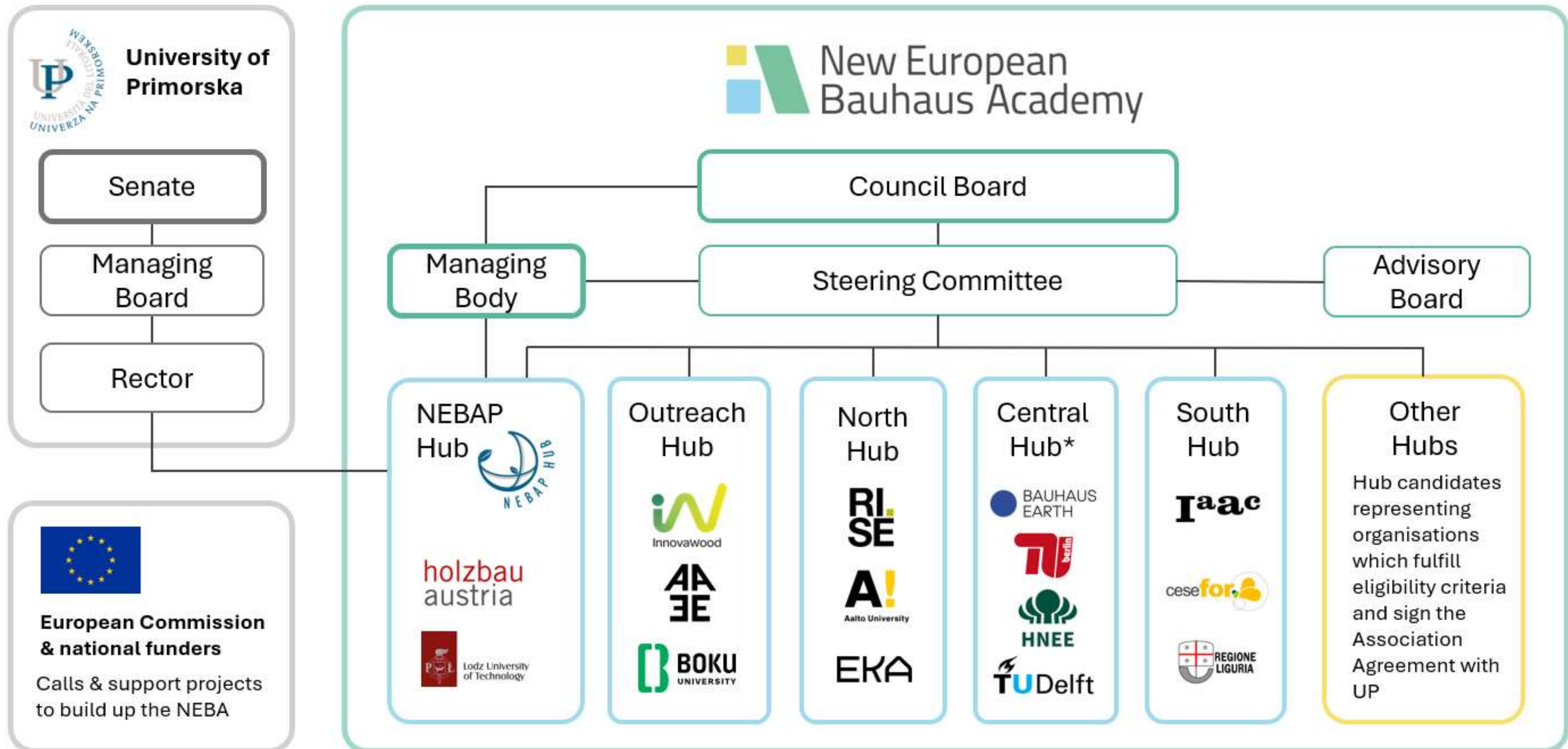
**Construction ecosystem, private sector.**

TG4

**General public and civil society.**



# Organisational Model





## ACHIEVED SO FAR

Codesigned the **NEB Academy** with an EU-wide Alliance

Five initial **NEB Academy Regional Hubs**.

The **initial governance structure**

Draft legal **Founding Association Agreement** to form the NEB Academy network of hubs





## ACHIEVED SO FAR

Establish leading **NEBA Hubs** and initiate training activities

**Piloted in-person trainings**, >500 participants joined the in-person trainings.

**>25 training courses** on the **NEBA online platform** for key training areas:

- Biobased materials,
- Nature-based solutions;
- Buildings;
- Cultural Heritage;
- Design;
- Digitalisation.

**Cascade grants** involved additional **28** partners





## ACHIEVED SO FAR

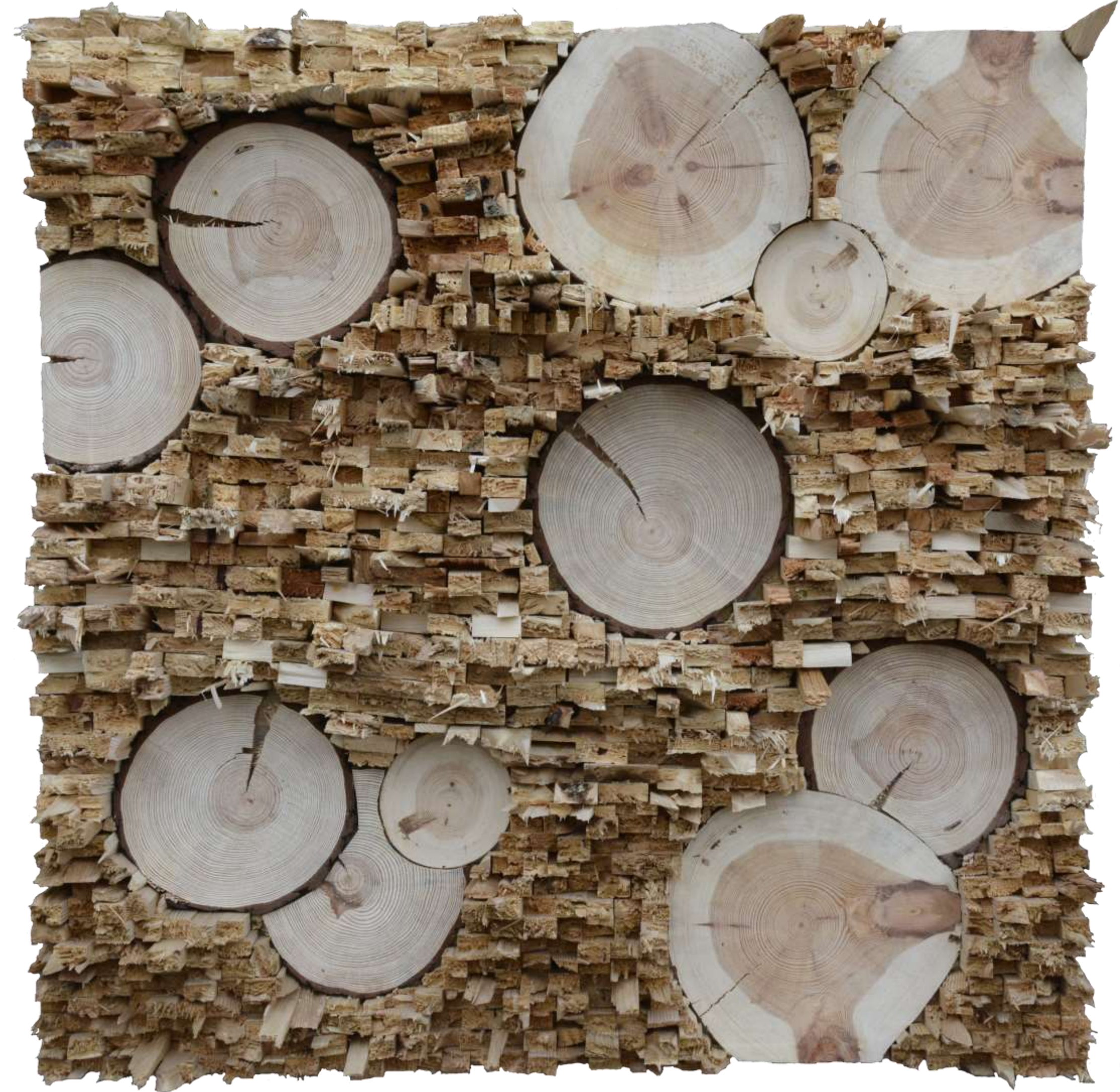
Built up the **Community of Practice** and initiate a **Skills Agenda** and **Policy Roadmap**

Each NEBA Hub has identified relevant **stakeholders, knowledge gaps, and training needs.**

The **NEBA Recognition Framework** - course recognition and quality assurance

The NEB Academy on the **policy level.**

- Wood4Bauhaus
- WoodPoP
- policy recommendations for the NEB





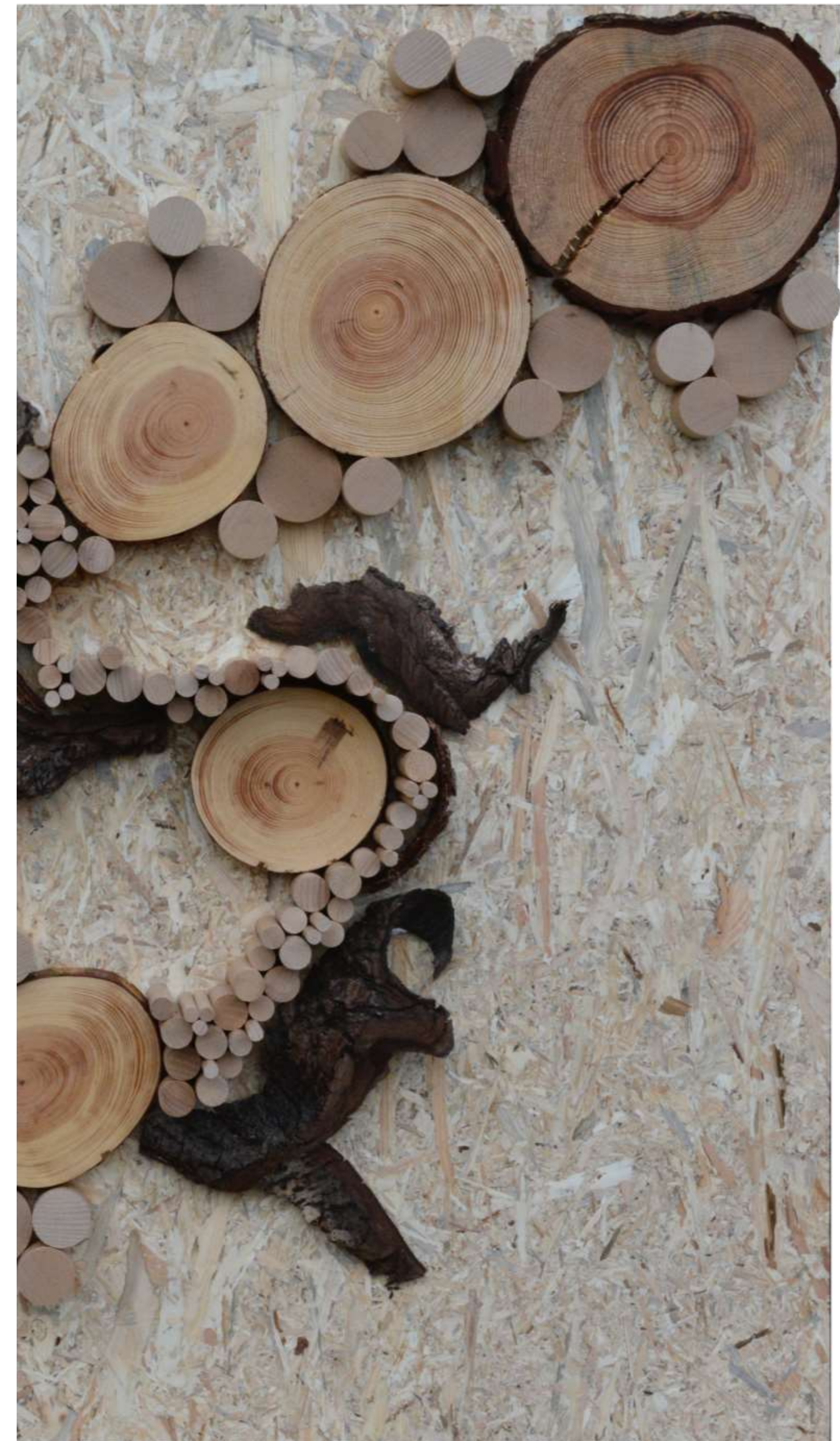
## ACHIEVED SO FAR

**Attract the target groups** to the CoP through dissemination, exploitation, and outreach

Links with networks like ACE and EBU and engaging international partners in **Ukraine, Japan, Brazil, and Canada**

The digital infrastructure for **NEBA's online learning and collaboration platform** is elaborated to enable further scaling.

**International conferences, workshops, scientific papers.**





# NEXT STEPS: ROLL-OUT AND SCALING

**Establish a Strong NEB Academy Brand**

**Transform the NEBA Platform into a Premier Training Marketplace**

Action 1: Strengthen Operational Capacity of NEBA Hubs

Action 2: Develop and Implement Rigorous Quality Assurance Frameworks

Action 3: Enhance the NEBA Online Platform as a Central Course Provider Learning Hub

Action 4: Develop a Sustainable Business Model for Long-Term Viability





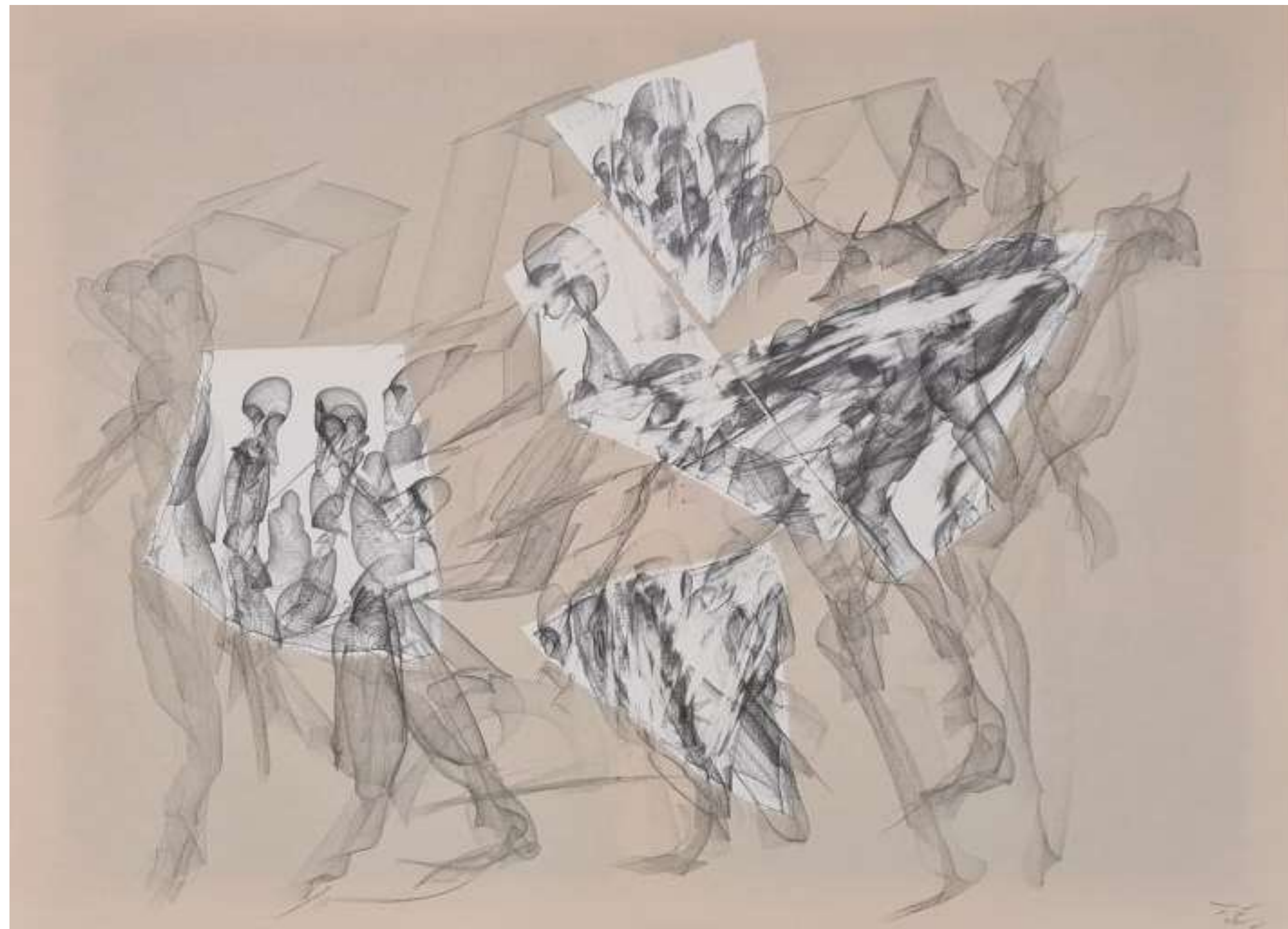
# 1<sup>st</sup> New European Bauhaus Academy Conference

## **Training the European building sector for a regenerative and resilient future**

Barcelona, February 27, 2026

UNESCO-UIA Barcelona 2026 World Capital of Architecture









Follow the  
NEBA on  
Linkedin



Andreja Kutnar  
Andreja.kutnar@innorennew.eu

Website : [neb.academy](https://neb.academy)  
Linkedin : [NEB-Academy](https://www.linkedin.com/company/neb-academy)