



LIFE BE-WoodEN

Buildings and Education in Wood Ecosystem for the New European Bauhaus

Project Number 101148077



Project Leader



**Università
di Genova**

**DAD DIPARTIMENTO
ARCHITETTURA E DESIGN**

Project Partners



REGIONE LIGURIA





INNOVATION CHALLENGE FOR THE DESIGN OF THE COMMON AREAS OF AN ELDERLY HOME

FIRST STEP, November 2024

Expression of interest for the engagement in the workshops of artists, craftsmen, experts in social inclusion, social engagement, professionals (architects, engineers, construction companies)
→ 48 (18 experts and 30 professionals) divided into 8 heterogeneous groups and involved in the **Challenge Based Learning (CBL)**

SECOND STEP, February 2025

- I. Discussion of **innovative approaches** to housing sustainability, inclusivity, and beauty
- II. **Matching Workshop** where interdisciplinary groups were formed to brainstorm and develop innovative solutions for the future of housing

INNOVATION CHALLENGE FOR THE DESIGN OF THE COMMON AREAS OF AN ELDERLY HOME

THIRD STEP, March 2025

Organization of a two-days **innovative design workshop (INNOVATION LAB)** through a NEB approach for a social housing residence, owned by ARTE Imperia

Key aspects

- **Challenge Based Learning (CBL)** method;
- Multidisciplinary groups;
- **NEB Compass** as evaluation tool;
- Dialogue with local stakeholders and community (cultural associations, volunteers, social cooperatives, scout groups, institutions);
- Visit to the social housing building;
- Neighbourhood involvement





June 2025: **Evaluation** by a CBL Technical Commission composed of University of Genoa, ARTE Imperia, Regione Liguria, ART-ER



SELECTION OF THE WINNING PROJECT

FOURTH STEP, September 2025 – December 2025

Implementation of Pilot Action using wooden and sustainable structures and installations to transform outdoor and indoor spaces in a social housing building owned by ARTE Imperia, and to enhance usability for the elderly and mobility-restricted residents.

Self Construction of internal and external spaces

HOME THE WINNING PROJECT, realization: October 18th – November 9th

Title: multipurpose socio-cultural space

Some details of the project

- A. Analysis of the **needs** of the residents, inhabitants of the neighborhood and stakeholders;
- B. NEB values and working principles application
- C. Reinforcement of the **sociality of residents**, the inclusion of the most vulnerable segments of the territory, and active participation;
- D. Use of sustainable and natural materials for **modular furnishing system** and a **site-specific wooden structure**;
- E. **Participatory process**, involvement of students and volunteers;
- F. **Reappropriation** of common spaces;
- G. **Sustainability** over time, by community management;
- H. Use by **vulnerable people**;

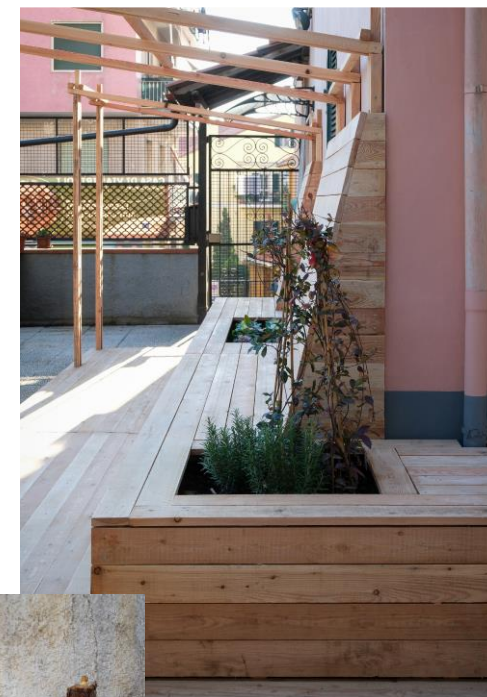
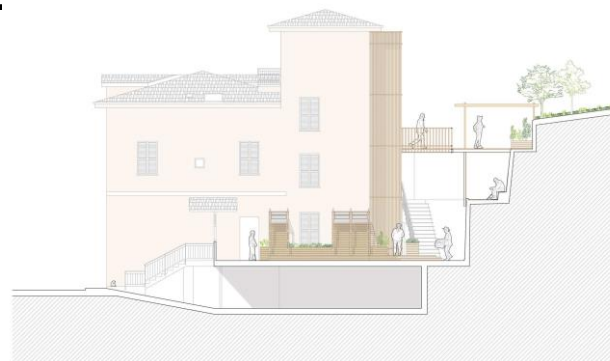


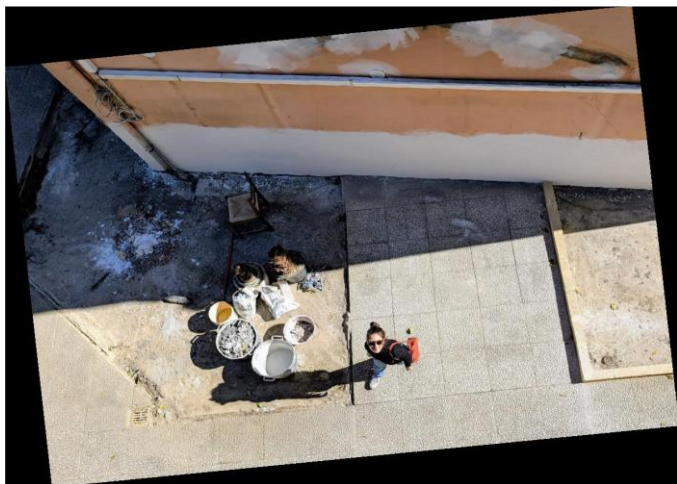
Photo by Marta Casanova

INNOVATION CHALLENGE FOR THE DESIGN OF THE COMMON AREAS OF AN ELDERLY HOME

OUTDOOR SPACES

BEFORE

AFTER



INDOOR SPACES

BEFORE

AFTER

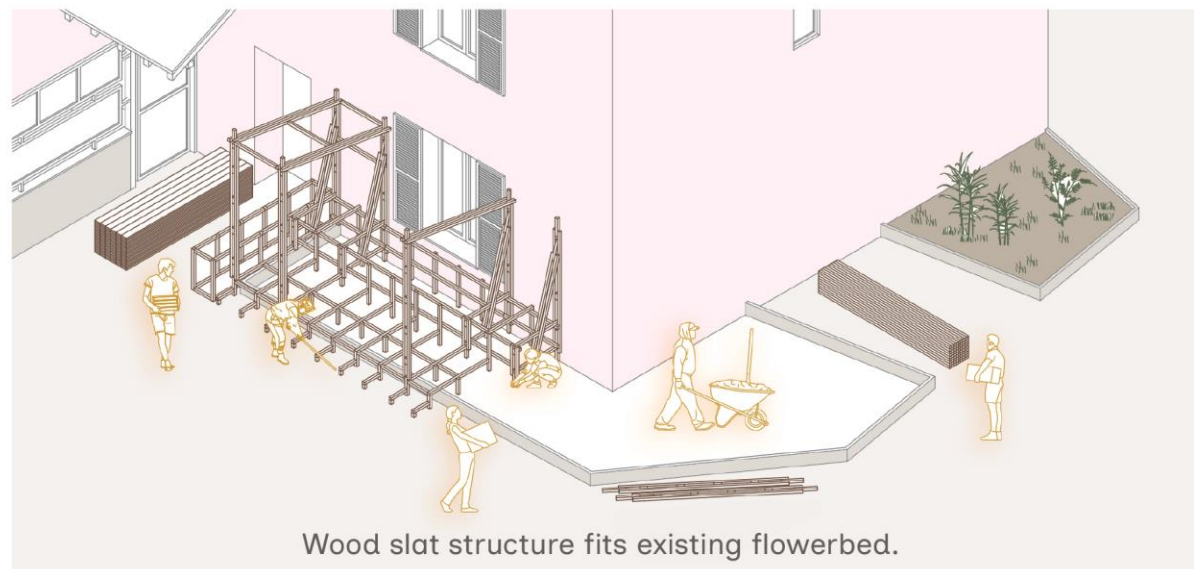


INNOVATION CHALLENGE FOR THE DESIGN OF THE COMMON AREAS OF AN ELDERLY HOME

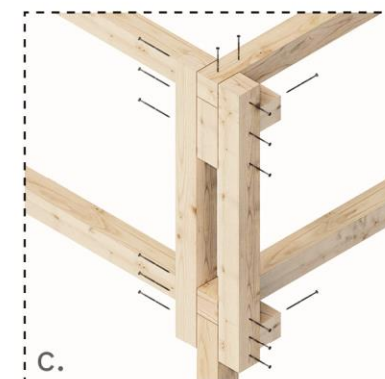
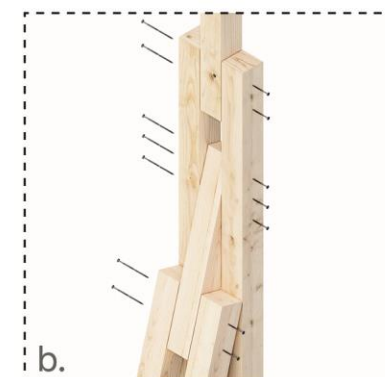
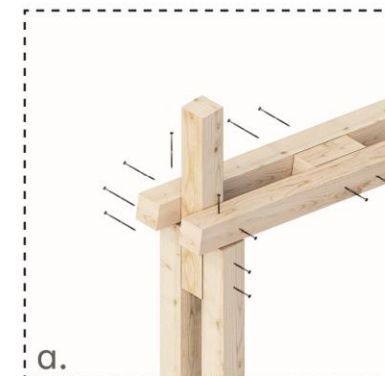
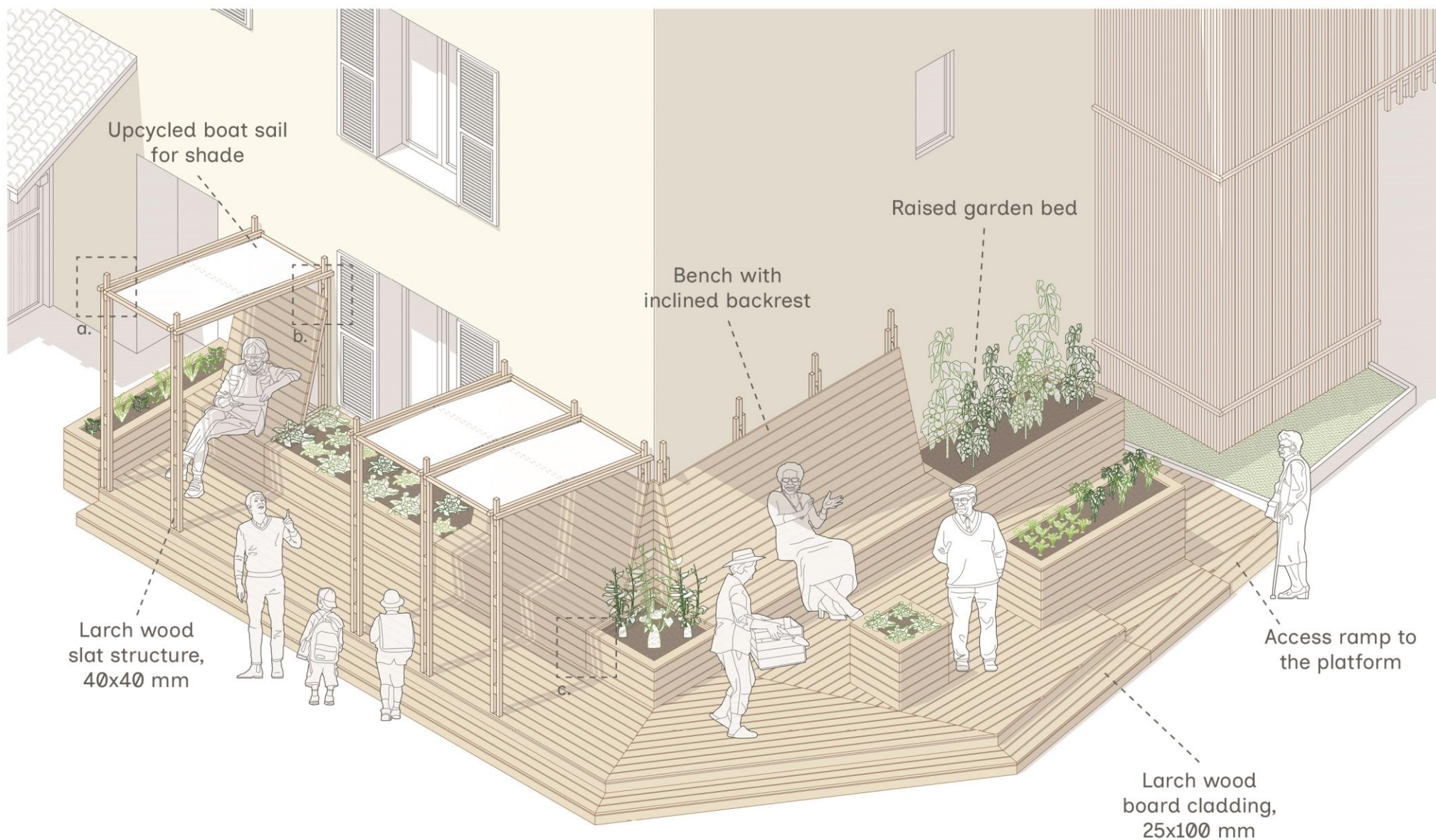


**CASA DI
VIA PIRINOLI**

INNOVATION CHALLENGE FOR THE DESIGN OF THE COMMON AREAS OF AN ELDERLY HOME



INNOVATION CHALLENGE FOR THE DESIGN OF THE COMMON AREAS OF AN ELDERLY HOME



INNOVATION CHALLENGE FOR THE DESIGN OF THE COMMON AREAS OF AN ELDERLY HOME



INNOVATION CHALLENGE FOR THE DESIGN OF THE COMMON AREAS OF AN ELDERLY HOME



INNOVATION CHALLENGE FOR THE DESIGN OF THE COMMON AREAS OF AN ELDERLY HOME



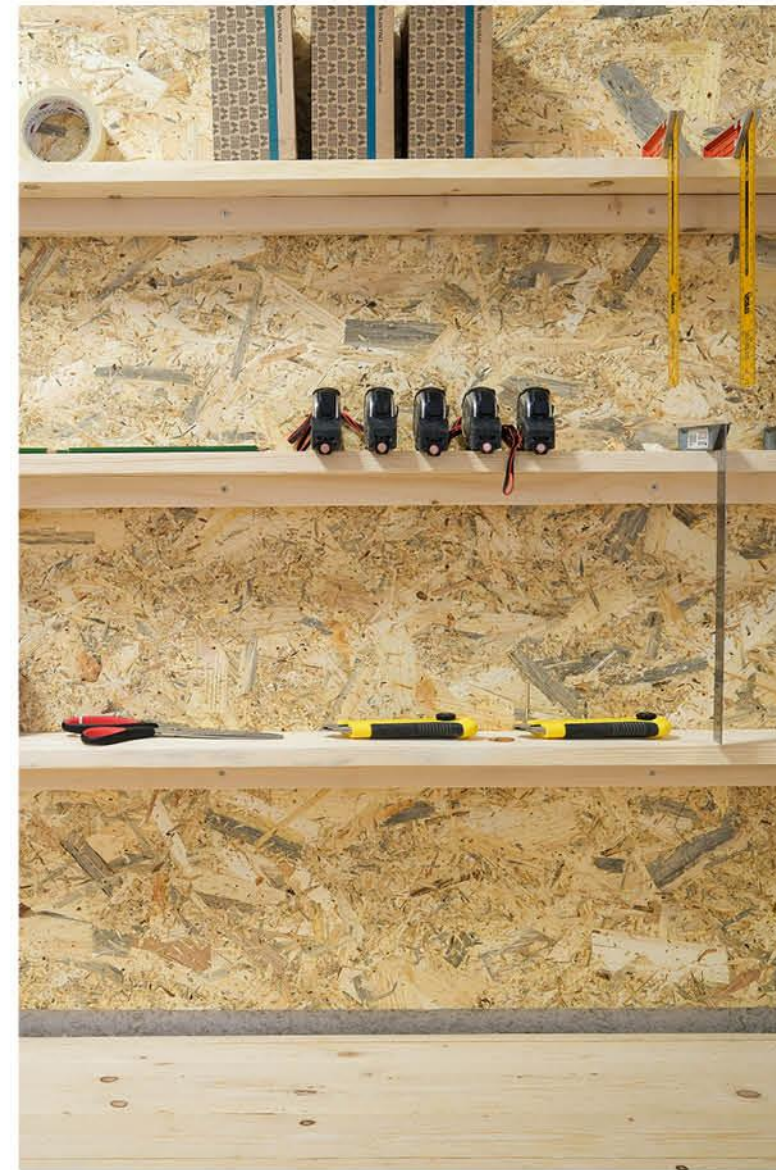
INNOVATION CHALLENGE FOR THE DESIGN OF THE COMMON AREAS OF AN ELDERLY HOME



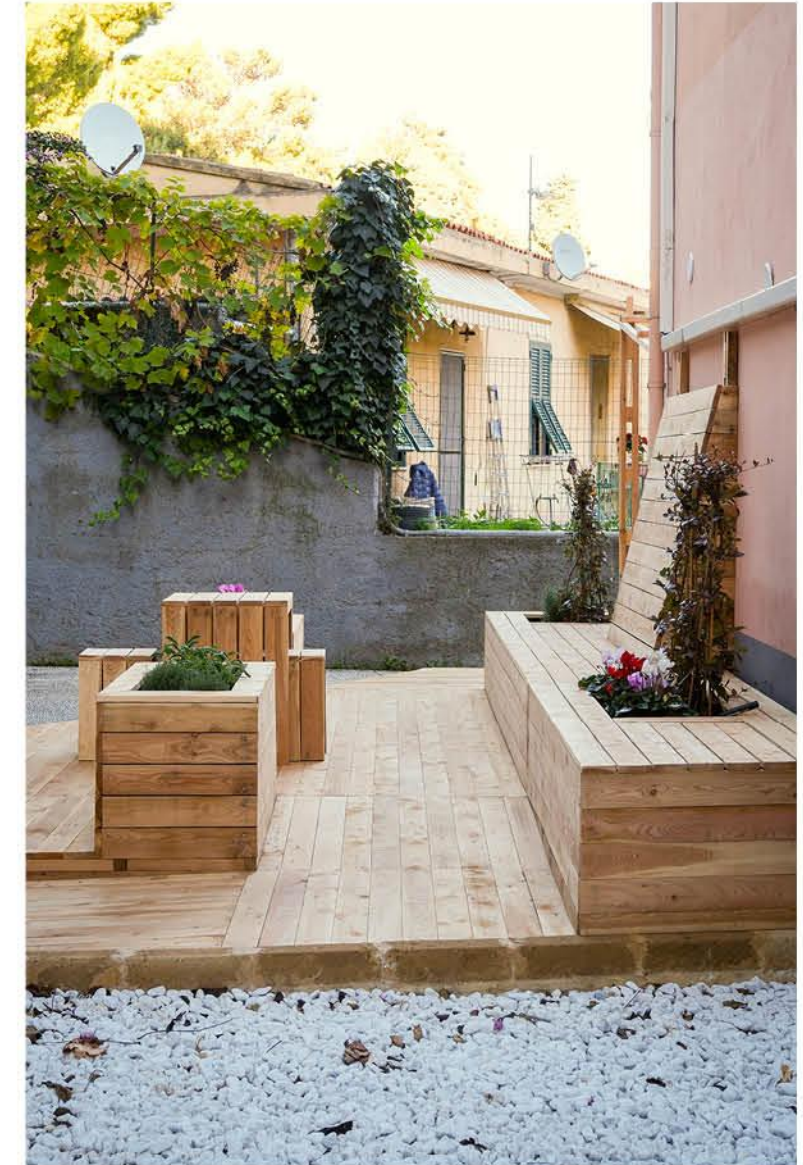
INNOVATION CHALLENGE FOR THE DESIGN OF THE COMMON AREAS OF AN ELDERLY HOME



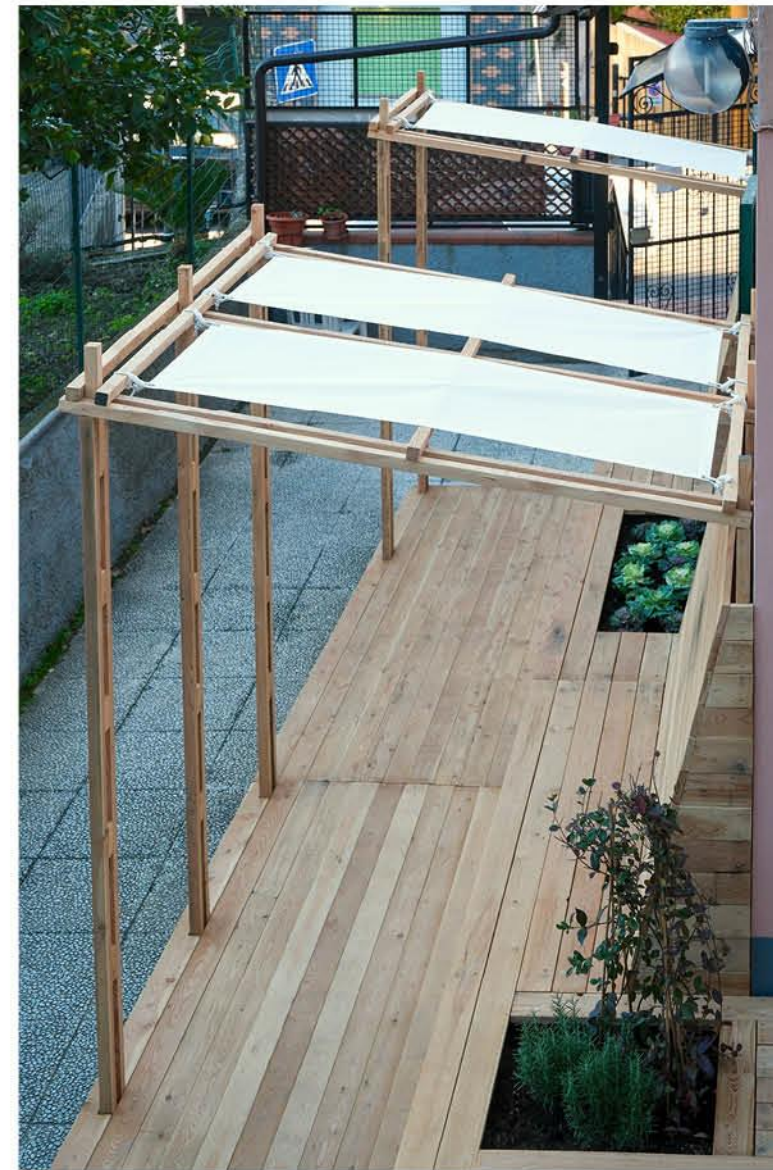
INNOVATION CHALLENGE FOR THE DESIGN OF THE COMMON AREAS OF AN ELDERLY HOME



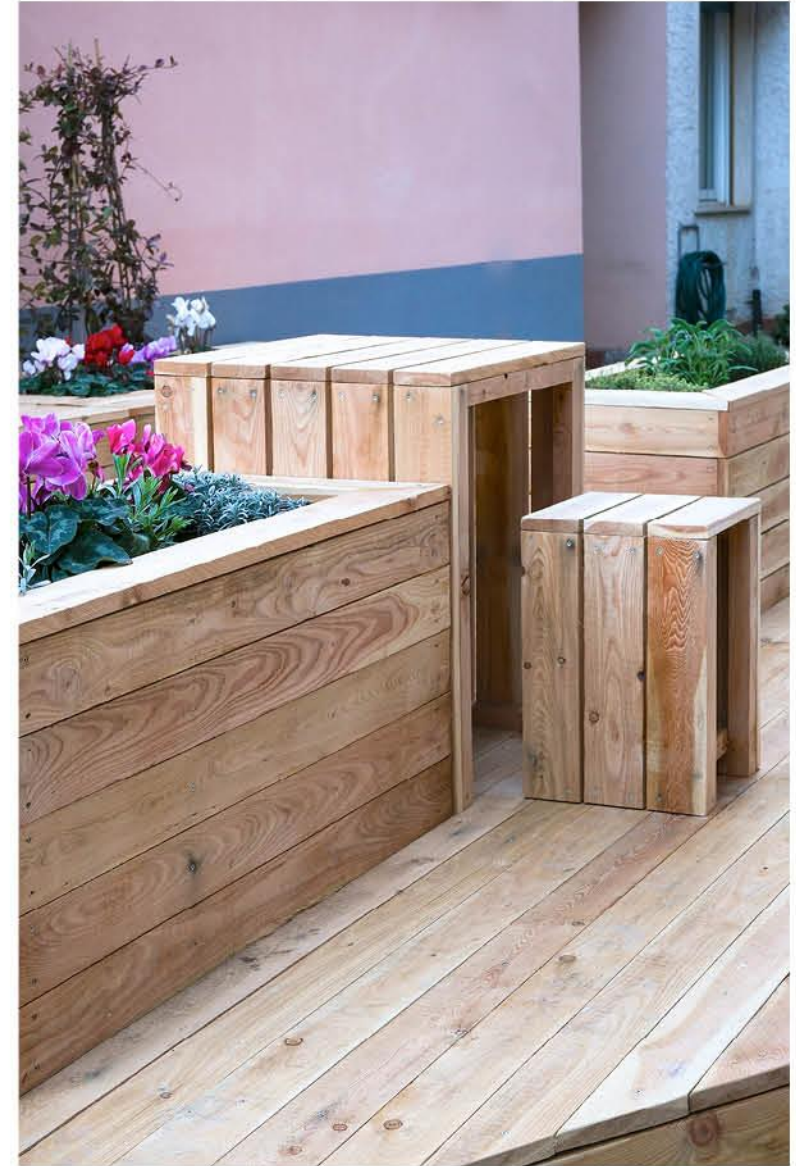
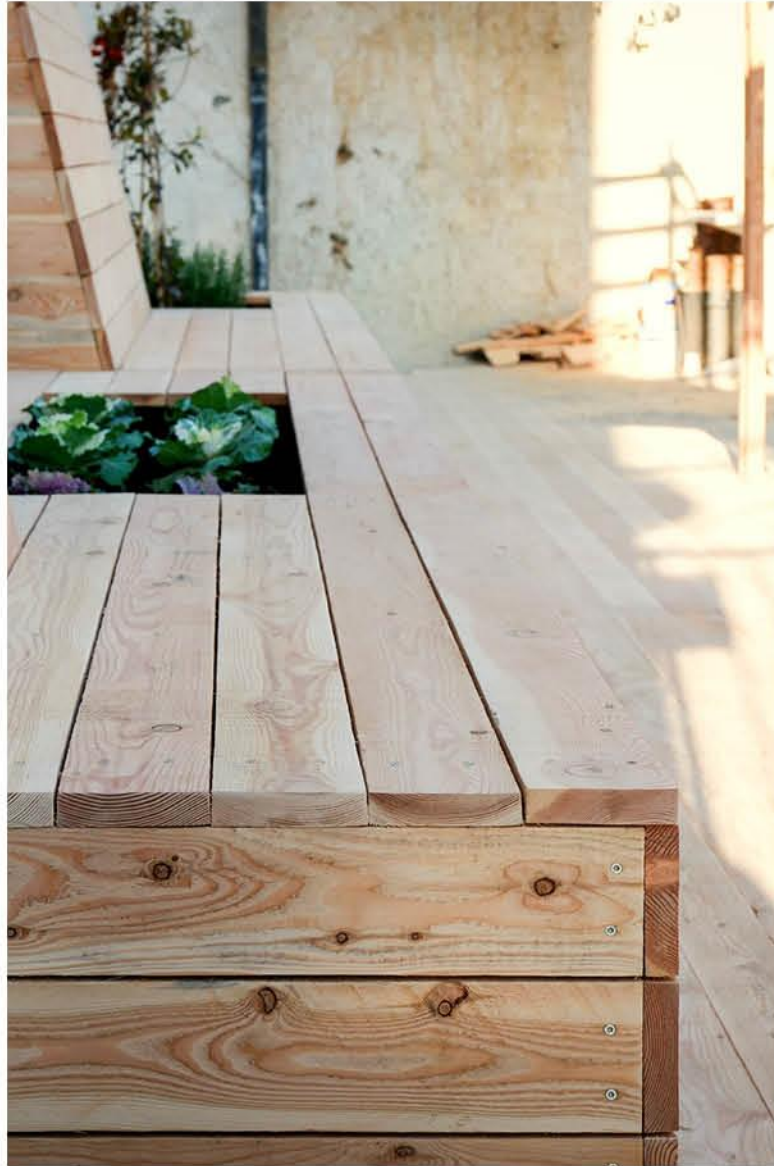
INNOVATION CHALLENGE FOR THE DESIGN OF THE COMMON AREAS OF AN ELDERLY HOME



INNOVATION CHALLENGE FOR THE DESIGN OF THE COMMON AREAS OF AN ELDERLY HOME



INNOVATION CHALLENGE FOR THE DESIGN OF THE COMMON AREAS OF AN ELDERLY HOME



INNOVATION CHALLENGE FOR THE DESIGN OF THE COMMON AREAS OF AN ELDERLY HOME



LIFE BE-WoodEN

Buildings and Education in Wood Ecosystem for the New European Bauhaus

Project Acronym: LIFE23-PRE-IT-LIFE BE-WoodEN

Co-funded by the European Union. Views and opinions expressed are however those of the author(s) only and do not necessarily reflect those of the European Union or CINEA. Neither the European Union nor the granting authority can be held responsible for them.

<https://lifebewooden.unige.it>

Project Leader



**Università
di Genova**

**DAD DIPARTIMENTO
ARCHITETTURA E DESIGN**

Project Partners

