



# TOOLKIT FOR THE VALORIZATION OF ENVIRONMENTAL PERFORMANCES IN THE WOOD SUPPLY CHAIN





## LIFE BE-WOODEN

**SUSTAINABILITY, BEAUTY, INCLUSION:** THESE ARE THE THREE PILLARS OF THE **NEW EUROPEAN BAUHAUS** APPROACH THAT HAVE INSPIRED THE LIFE BE-WOODEN PROJECT.

THE PROJECT AIMS TO:

- PROMOTE **SUSTAINABILITY IN CONSTRUCTION** BY OVERCOMING THE FRAGMENTATION OF THE LOCAL WOOD SECTOR SUPPLY CHAIN;
- OVERCOME CULTURAL, TECHNICAL, AND ECONOMIC BARRIERS THAT CURRENTLY LIMIT THE **USE OF WOOD AND BIO-BASED MATERIALS IN THE CONSTRUCTION SECTOR**;
- PROMOTE **NEB PRINCIPLES** THROUGHOUT THE ENTIRE CONSTRUCTION PROCESS—FROM PRODUCTION AND DESIGN TO INSTALLATION AND BUILDING MANAGEMENT—THROUGHOUT THEIR LIFECYCLE.



PROJECT WEBSITE

## TOOLKIT OBJECTIVES

THE OBJECTIVE OF THIS **GUIDE** OR **TOOLKIT** IS TO PROVIDE WOOD SUPPLY CHAIN OPERATORS A ROADMAP OF TOOL CATEGORIES AIMED AT ENHANCING THE ENVIRONMENTAL PERFORMANCE ASSOCIATED WITH THE USE OF WOOD IN CONSTRUCTION.

FOR EACH CATEGORY, AN IN-DEPTH ANALYSIS OF THE MOST WIDELY USED AND RECOGNIZED ENHANCEMENT TOOLS IS PROVIDED.

THE **GUIDE** DOES NOT AIM TO BE EXHAUSTIVE BUT SEEKS TO SUPPORT OPERATORS IN MAKING STRATEGIC DECISIONS ON THEIR SUSTAINABILITY PATH.

## TARGET USERS

THE **TOOLKIT** IS PRIMARILY AIMED AT STAKEHOLDERS IN THE WOOD SUPPLY CHAIN, BUT IT MAY ALSO BE USEFUL FOR PROFESSIONALS AND PUBLIC OFFICERS.

## HOW TO USE THE TOOLKIT

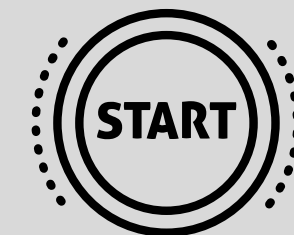
THE **TOOLKIT** IS AN **INTERACTIVE PDF**.

EACH **ICON** IS LINKED TO A **HYPertext** CONNECTION THAT REDIRECTS USERS TO SPECIFIC PAGES WITHIN THE DOCUMENT.

COLORS AND **ICONS** GUIDE USERS IN NAVIGATING THE **TOOLKIT**.



USER  
GUIDE



START



# HOW TO USE THE TOOLKIT

THE PROCESS BEGINS BY CHOOSING BETWEEN TWO DECISION PATHS:

- 1. ENVIRONMENTAL BENEFITS
- 2. ENTREPRISES OBJECTIVES

## ENVIRONMENTAL BENEFITS PATH

THE USER IS GUIDED THROUGH THE FOLLOWING STEPS:

- 1. SELECTING THE SUPPLY CHAIN PHASE TO WHICH THEIR COMPANY BELONGS
- 2. CHOOSING THE ENVIRONMENTAL BENEFIT ASSOCIATED WITH THE SELECTED SEGMENT
- 3. SELECTING THE TOOL CATEGORY LINKED TO THE CHOSEN BENEFIT
- 4. CHOOSING A SPECIFIC TOOL FOR FURTHER EXPLORATION WITHIN THE SELECTED CATEGORY
- 5. PRESENTATION OF THE TOOL

## ENTREPRISES OBJECTIVES PATH

THE USER IS GUIDED THROUGH THE FOLLOWING STEPS:

- 1. SELECTING THE ENTREPRISE OBJECTIVE
- 2. CHOOSING THE TOOL CATEGORY LINKED TO THE SELECTED OBJECTIVE
- 3. CHOOSING A SPECIFIC TOOL FOR FURTHER EXPLORATION WITHIN THE SELECTED CATEGORY
- 4. PRESENTATION OF THE TOOL



EXAMPLES

ICONS AND COLORS GUIDE THE USER IN NAVIGATING THE TOOLKIT.



SUPPLY CHAIN SEGMENT



TOOLS CATEGORIES



ENVIRONMENTAL BENEFITS



VALORIZATION TOOLS



ENTREPRISE OBJECTIVES



GO BACK TO THE PREVIOUS SELECTION



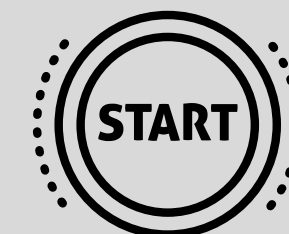
GO BACK TO THE INITIAL PAGE



USER GUIDE



LEGEND



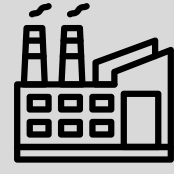
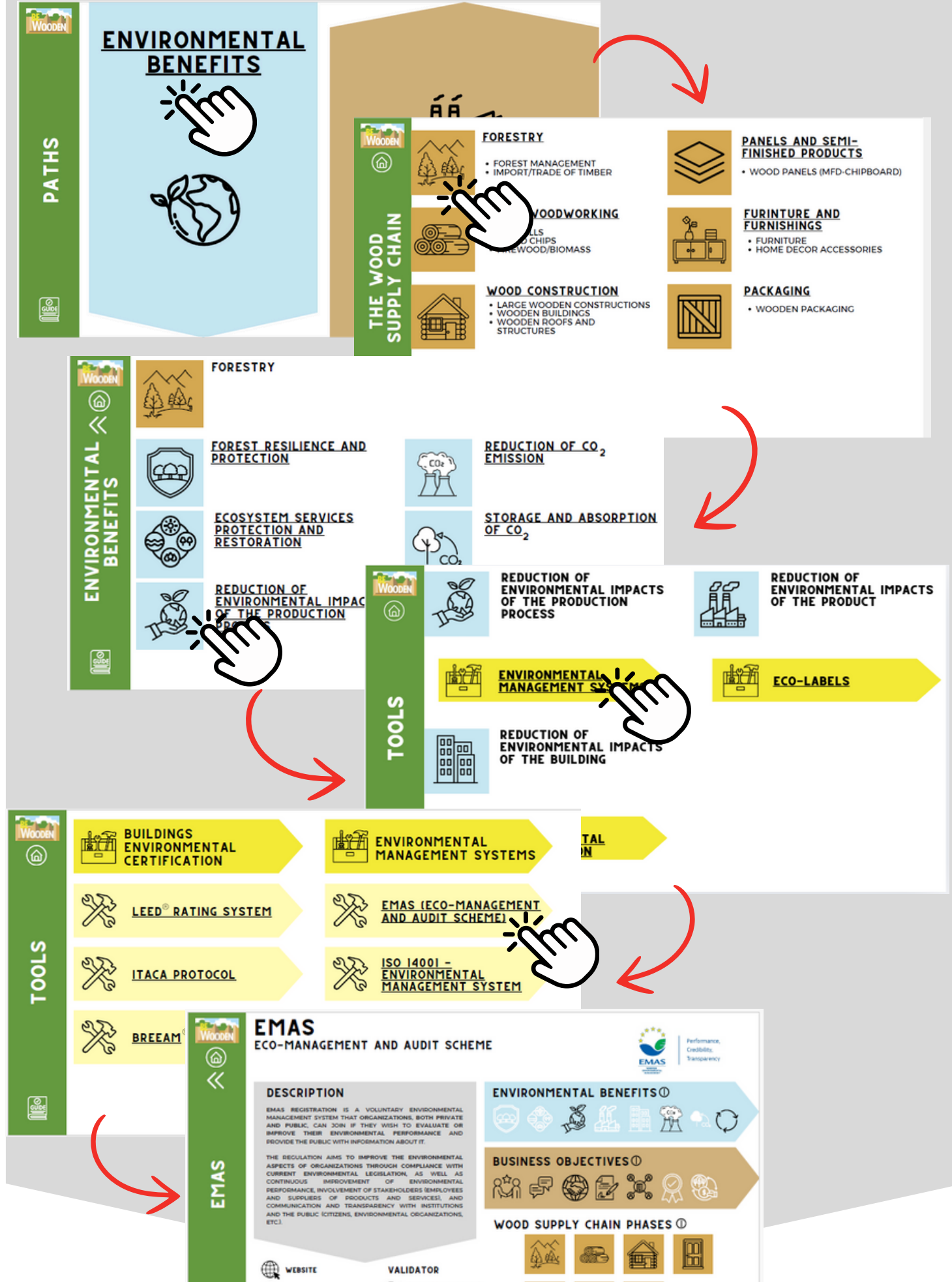
START



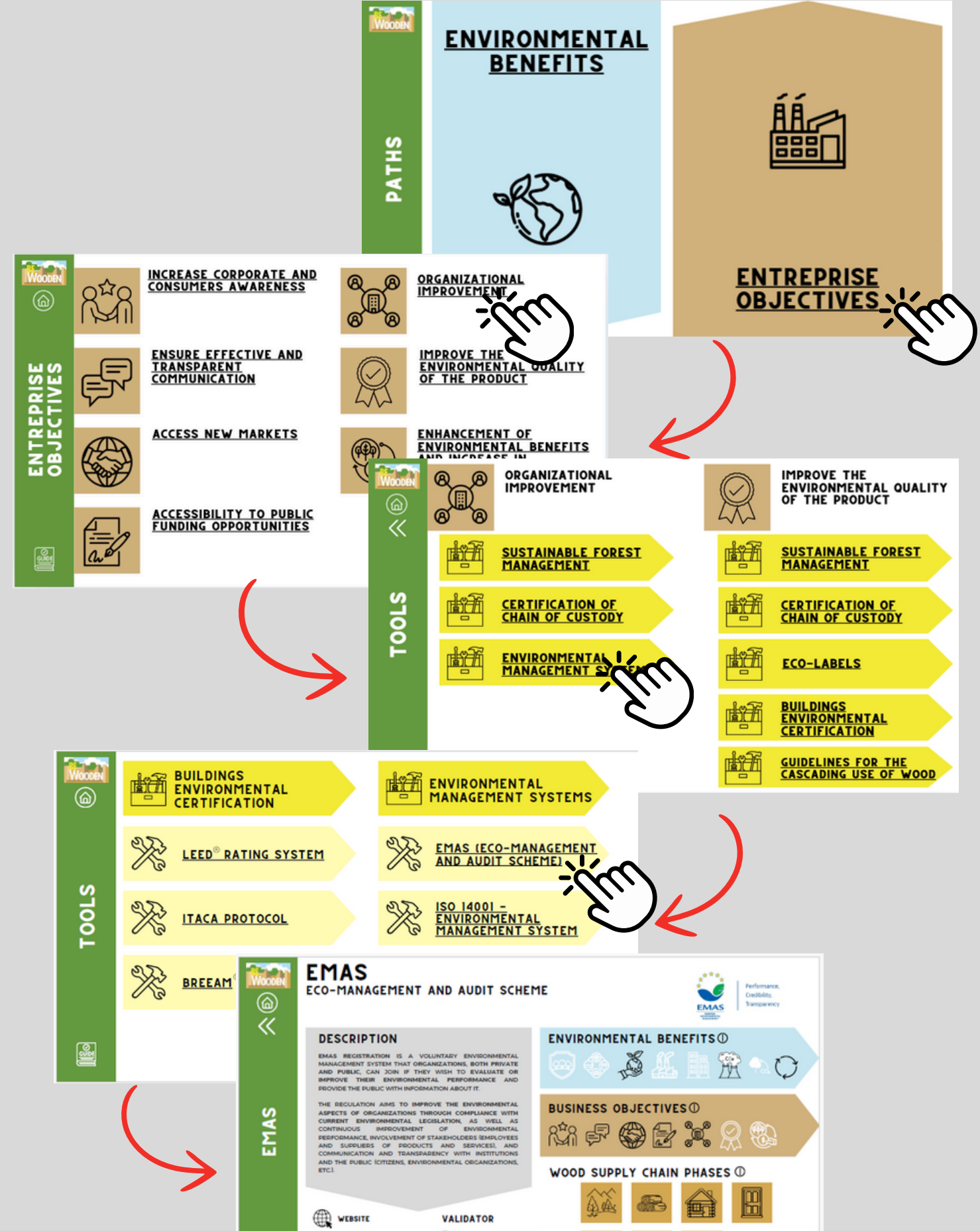
EXAMPLES



# ENVIRONMENTAL BENEFIT PATH



# ENTREPRISE OBJECTIVE PATH



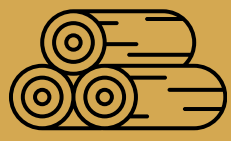


LEGEND

# WOOD SUPPLY CHAIN PHASES



FORESTRY



PRIME WOODWORKING



WOOD CONSTRUCTION



WOOD FINISHES FOR CONSTRUCTION AND OUTDOOR FURNITURE



PANELS AND SEMI-FINISHED PRODUCTS



FURNITURE AND FURNISHINGS

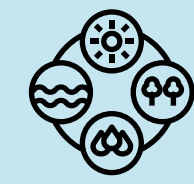


PACKAGING

# ENVIRONMENTAL BENEFITS



FOREST RESILIENCE AND PROTECTION



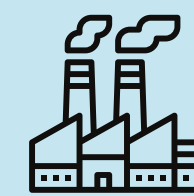
ECOSYSTEM SERVICES PROTECTION AND RESTORATION



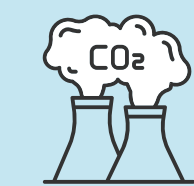
REDUCTION OF ENVIRONMENTAL IMPACTS OF THE PRODUCTION PROCESS



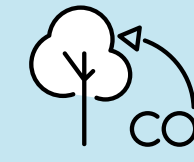
REDUCTION OF ENVIRONMENTAL IMPACTS OF THE BUILDING



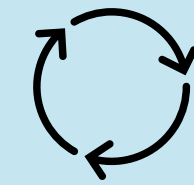
REDUCTION OF ENVIRONMENTAL IMPACTS OF THE PRODUCT



REDUCTION OF CO<sub>2</sub> EMISSIONS



STORAGE AND ABSORPTION OF CO<sub>2</sub>



INCREASE IN CIRCULARITY

# ENTREPREISE OBJECTIVES



INCREASE CORPORATE AND CONSUMERS AWARENESS



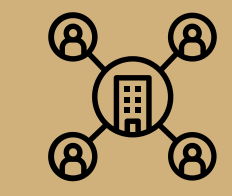
ENSURE EFFECTIVE AND TRANSPARENT COMMUNICATION



ACCESS NEW MARKETS



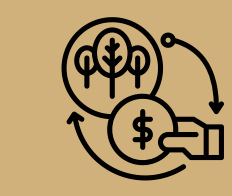
ACCESSIBILITY TO PUBLIC FUNDING OPPORTUNITIES



ORGANIZATIONAL IMPROVEMENT

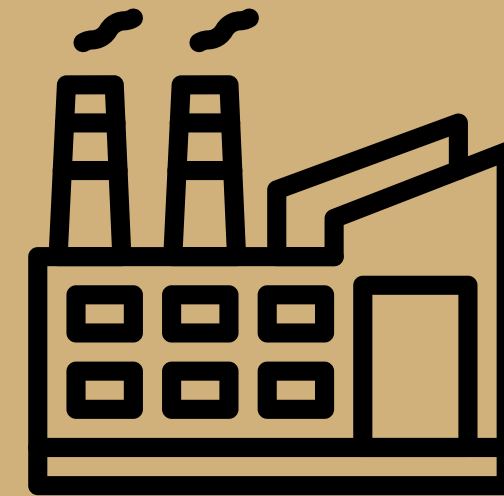
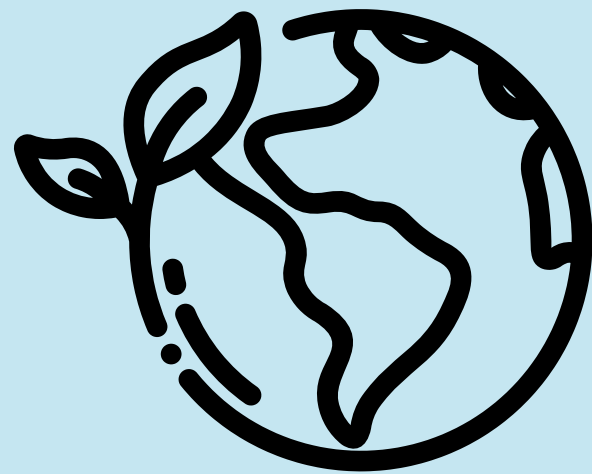


IMPROVE THE ENVIRONMENTAL QUALITY OF THE PRODUCT



ENHANCEMENT OF ENVIRONMENTAL BENEFITS AND INCREASE IN PROFITABILITY

# ENVIRONMENTAL BENEFITS



# ENTREPRISE OBJECTIVES

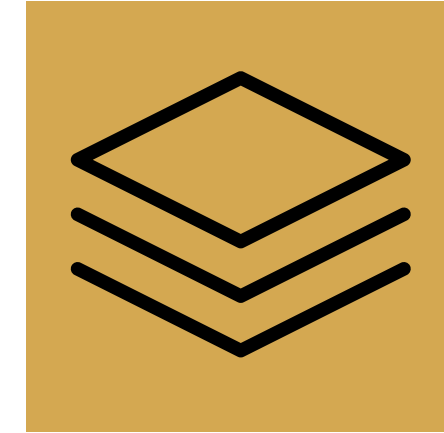


# THE WOOD SUPPLY CHAIN



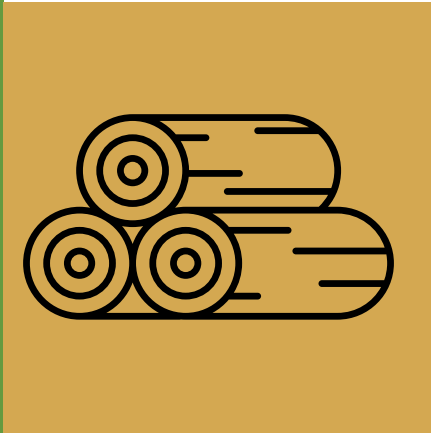
## FORESTRY

- FOREST MANAGEMENT
- IMPORT/TRADE OF TIMBER



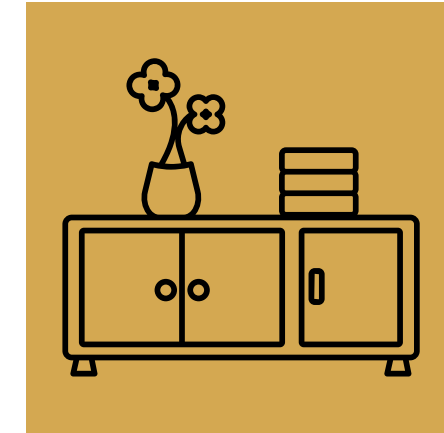
## PANELS AND SEMI-FINISHED PRODUCTS

- WOOD PANELS (MFD-CHIPBOARD)



## PRIME WOODWORKING

- SAWMILLS
- WOOD CHIPS
- FIREWOOD/BIOMASS



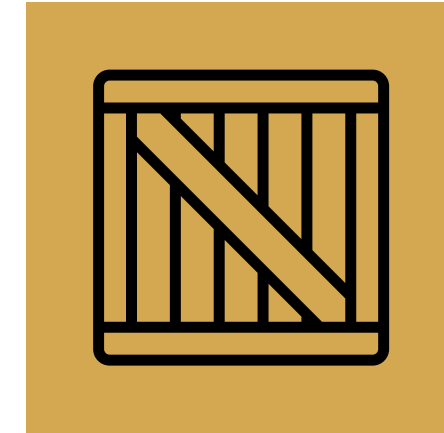
## FURINTURE AND FURNISHINGS

- FURNITURE
- HOME DECOR ACCESSORIES



## WOOD CONSTRUCTION

- LARGE WOODEN CONSTRUCTIONS
- WOODEN BUILDINGS
- WOODEN ROOFS AND STRUCTURES



## PACKAGING

- WOODEN PACKAGING



## WOOD FINISHES FOR CONSTRUCTION AND OUTDOOR FURNITURE

- WOODEN FLOORING
- DOORS AND FIXTURES
- BOISERIE
- OUTDOOR WOODEN FURNITURE



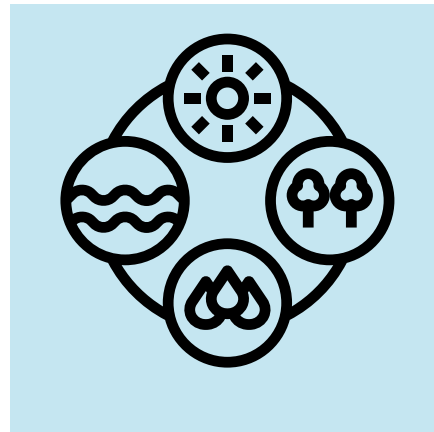
**ENVIRONMENTAL  
BENEFITS**



**FORESTRY**



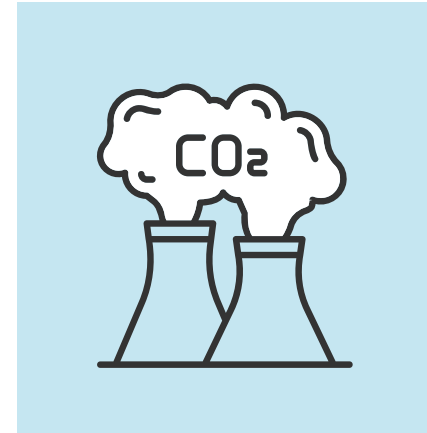
**FOREST RESILIENCE AND PROTECTION**



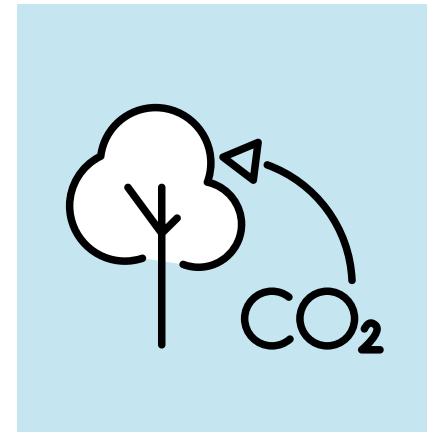
**ECOSYSTEM SERVICES PROTECTION AND RESTORATION**



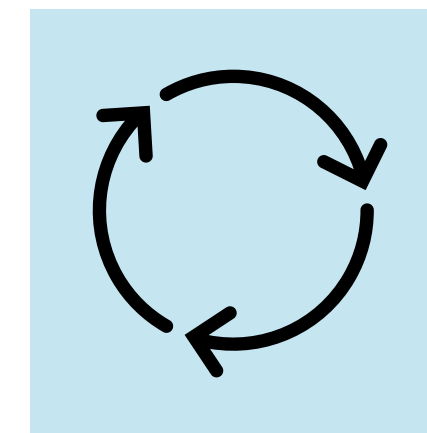
**REDUCTION OF ENVIRONMENTAL IMPACTS OF THE PRODUCTION PROCESS**



**REDUCTION OF CO<sub>2</sub> EMISSION**



**STORAGE AND ABSORPTION OF CO<sub>2</sub>**

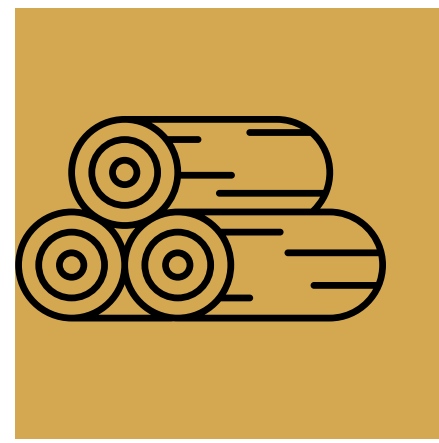


**INCREASE IN CIRCULARITY**





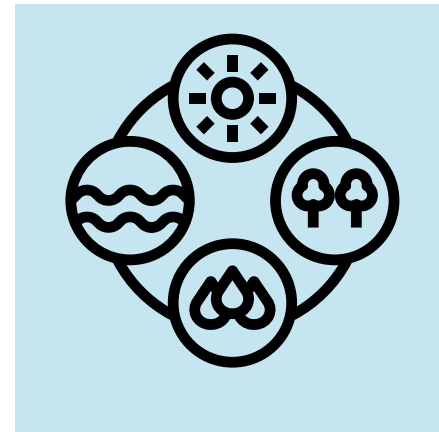
**ENVIRONMENTAL BENEFITS**



**PRIME WOODWORKING**



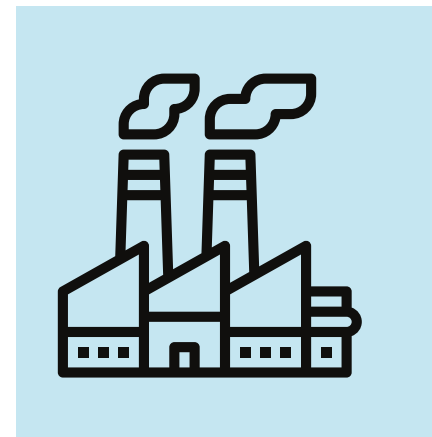
**FOREST RESILIENCE AND PROTECTION**



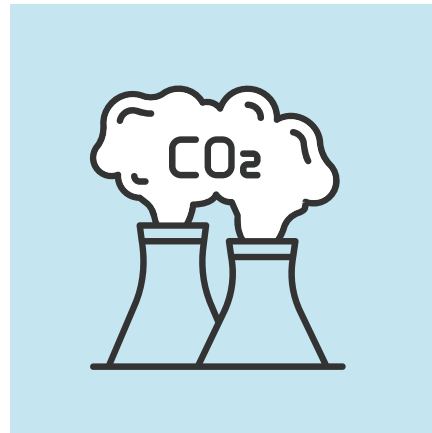
**ECOSYSTEM SERVICES PROTECTION AND RESTORATION**



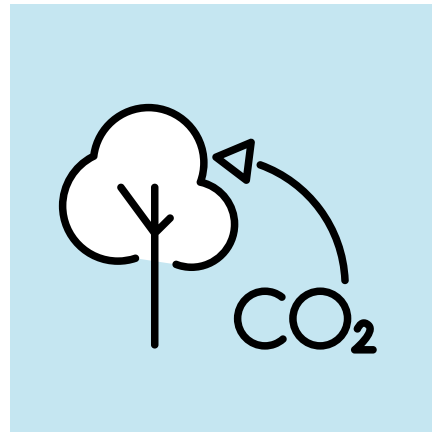
**REDUCTION OF ENVIRONMENTAL IMPACTS OF THE PRODUCTION PROCESS**



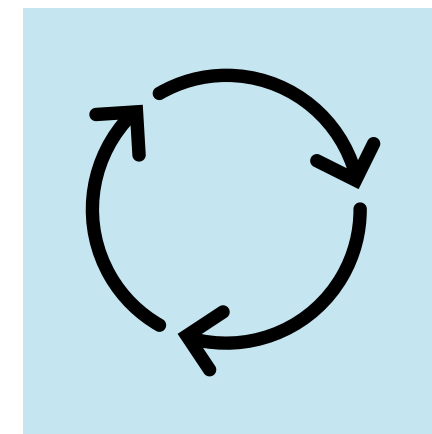
**REDUCTION OF ENVIRONMENTAL IMPACTS OF THE PRODUCT**



**REDUCTION OF CO<sub>2</sub> EMISSION**



**STORAGE AND ABSORPTION OF CO<sub>2</sub>**



**INCREASE IN CIRCULARITY**



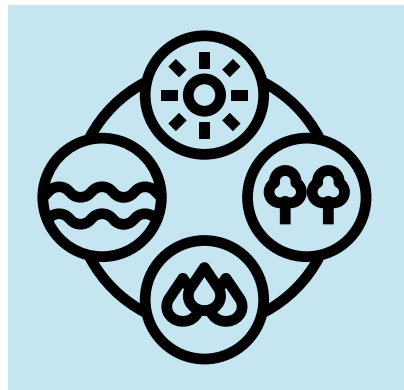
**ENVIRONMENTAL  
BENEFITS**



**WOOD CONSTRUCTION**



**FOREST RESILIENCE AND PROTECTION**



**ECOSYSTEM SERVICES PROTECTION AND RESTORATION**



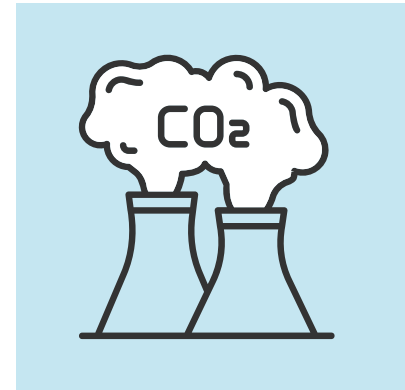
**REDUCTION OF ENVIRONMENTAL IMPACTS OF THE PRODUCTION PROCESS**



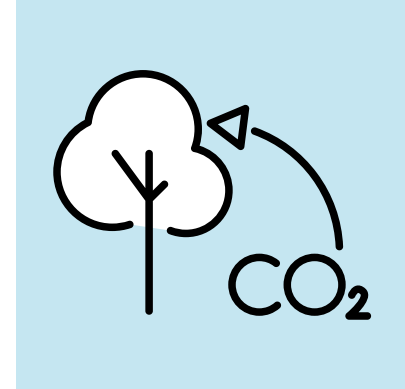
**REDUCTION OF ENVIRONMENTAL IMPACTS OF THE BUILDING**



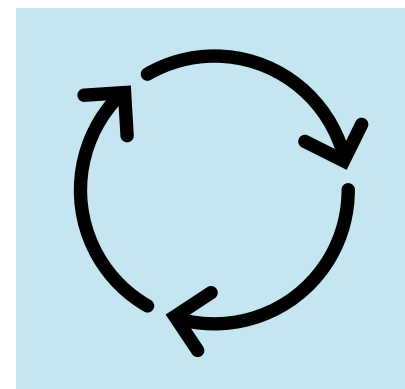
**REDUCTION OF ENVIRONMENTAL IMPACTS OF THE PRODUCT**



**REDUCTION OF CO<sub>2</sub> EMISSION**



**STORAGE AND ABSORPTION OF CO<sub>2</sub>**



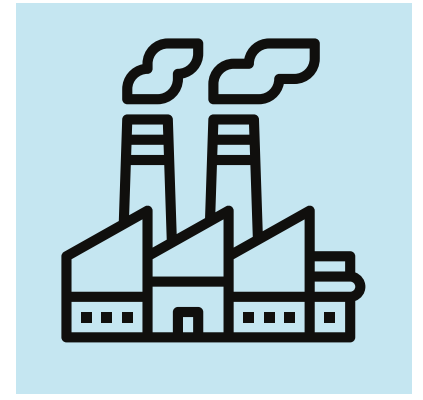
**INCREASE IN CIRCULARITY**



ENVIRONMENTAL BENEFITS



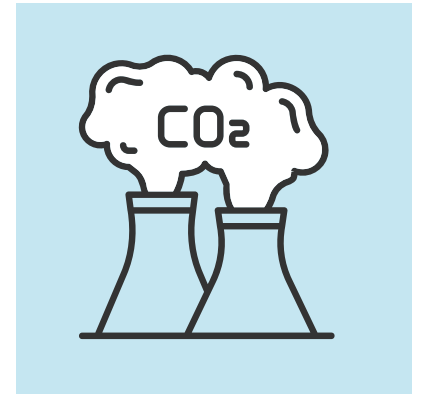
**WOOD FINISHES FOR CONSTRUCTION AND OUTDOOR FURNITURE**



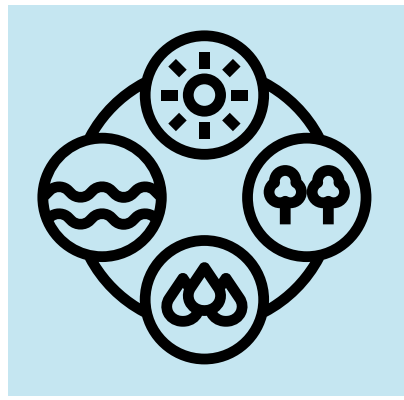
**REDUCTION OF ENVIRONMENTAL IMPACTS OF THE PRODUCT**



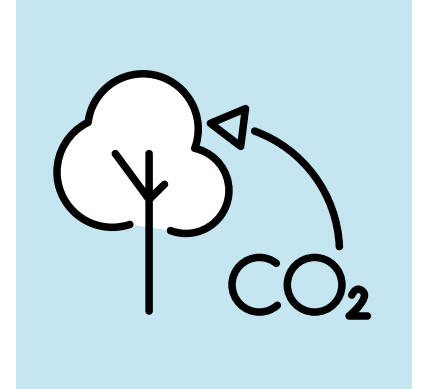
**FOREST RESILIENCE AND PROTECTION**



**REDUCTION OF CO<sub>2</sub> EMISSION**



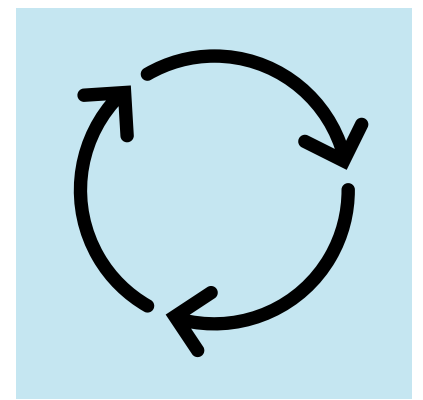
**ECOSYSTEM SERVICES PROTECTION AND RESTORATION**



**STORAGE AND ABSORPTION OF CO<sub>2</sub>**



**REDUCTION OF ENVIRONMENTAL IMPACTS OF THE PRODUCTION PROCESS**



**INCREASE IN CIRCULARITY**



**REDUCTION OF ENVIRONMENTAL IMPACTS OF THE BUILDING**



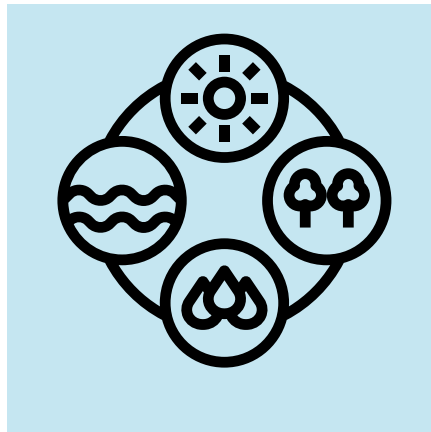
**ENVIRONMENTAL  
BENEFITS**



**PANELS AND  
SEMI-FINISHED  
PRODUCTS**



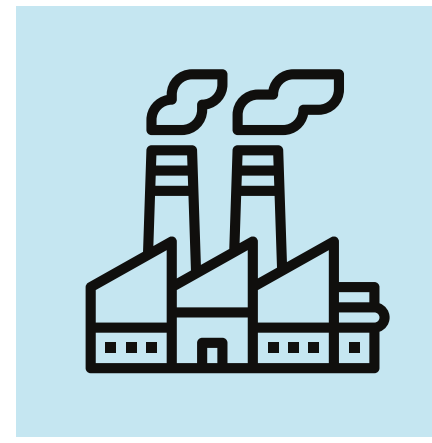
**FOREST RESILIENCE AND  
PROTECTION**



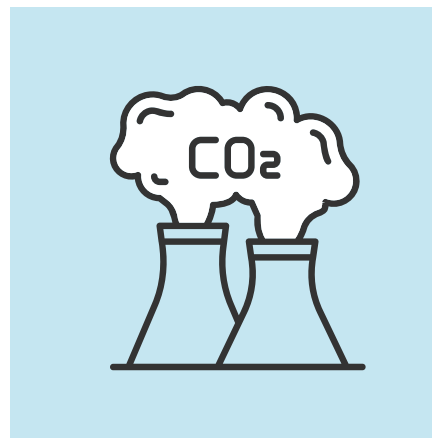
**ECOSYSTEM SERVICES  
PROTECTION AND  
RESTORATION**



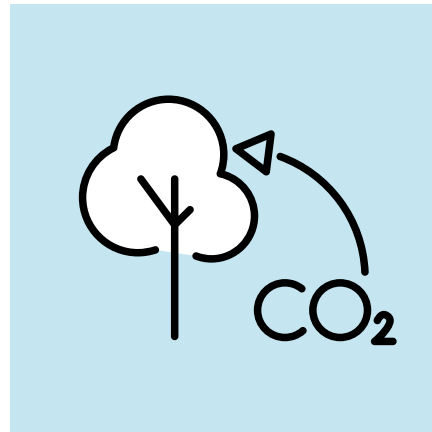
**REDUCTION OF  
ENVIRONMENTAL IMPACTS  
OF THE PRODUCTION  
PROCESS**



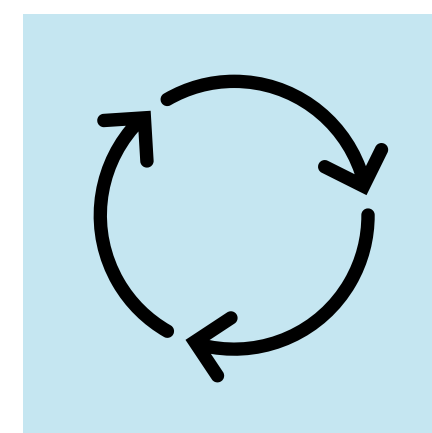
**REDUCTION OF  
ENVIRONMENTAL IMPACTS  
OF THE PRODUCT**



**REDUCTION OF CO<sub>2</sub>  
EMISSION**



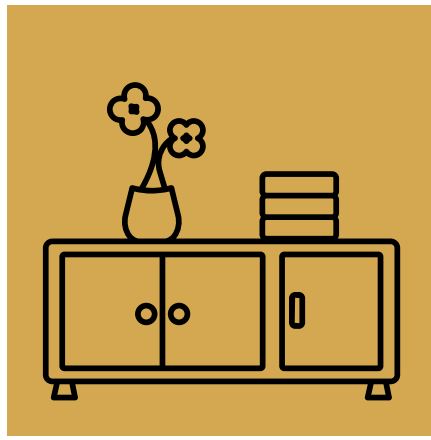
**STORAGE AND ABSORPTION  
OF CO<sub>2</sub>**



**INCREASE IN CIRCULARITY**



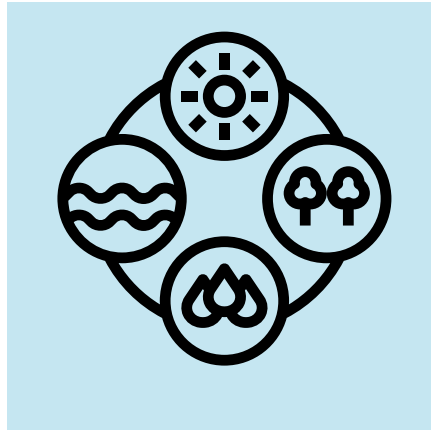
**ENVIRONMENTAL  
BENEFITS**



**FURNITURE AND FURNISHINGS**



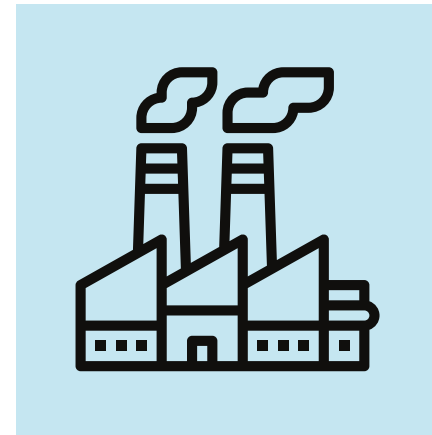
**FOREST RESILIENCE AND PROTECTION**



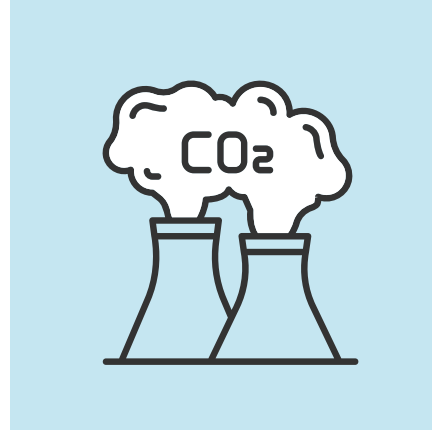
**ECOSYSTEM SERVICES PROTECTION AND RESTORATION**



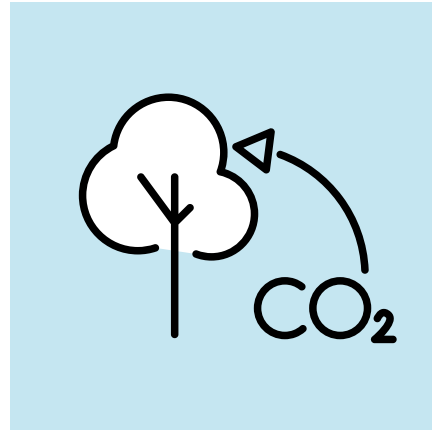
**REDUCTION OF ENVIRONMENTAL IMPACTS OF THE PRODUCTION PROCESS**



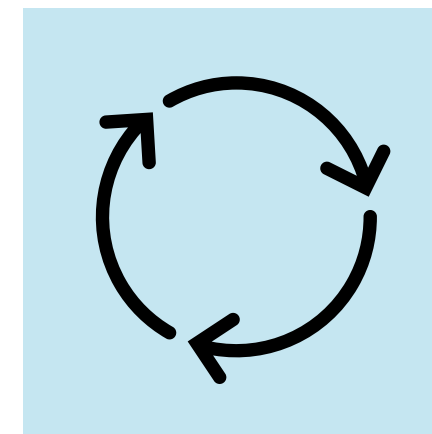
**REDUCTION OF ENVIRONMENTAL IMPACTS OF THE PRODUCT**



**REDUCTION OF CO<sub>2</sub> EMISSION**



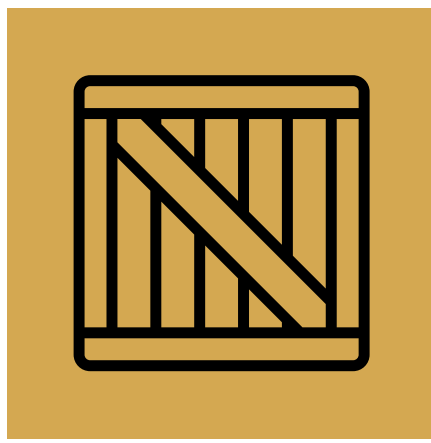
**STORAGE AND ABSORPTION OF CO<sub>2</sub>**



**INCREASE IN CIRCULARITY**



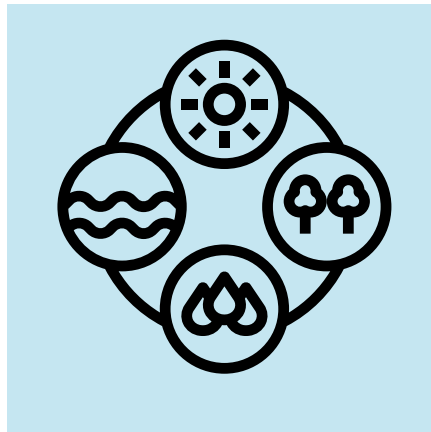
**ENVIRONMENTAL  
BENEFITS**



**PACKAGING**



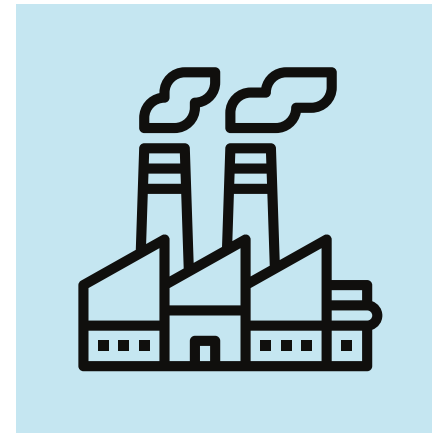
**FOREST RESILIENCE AND PROTECTION**



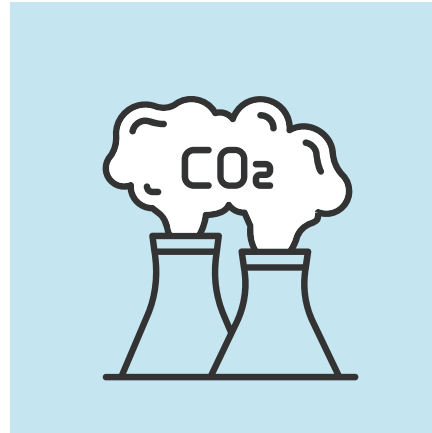
**ECOSYSTEM SERVICES PROTECTION AND RESTORATION**



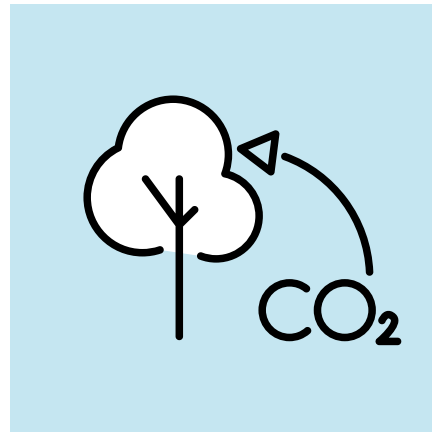
**REDUCTION OF ENVIRONMENTAL IMPACTS OF THE PRODUCTION PROCESS**



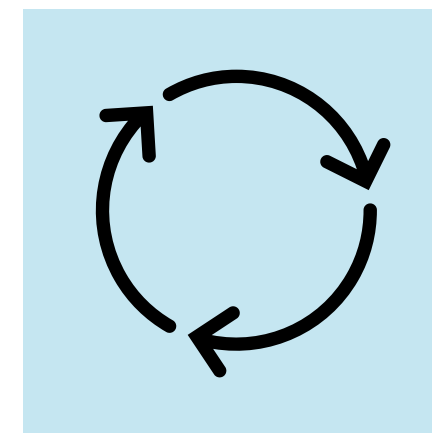
**REDUCTION OF ENVIRONMENTAL IMPACTS OF THE PRODUCT**



**REDUCTION OF CO<sub>2</sub> EMISSION**



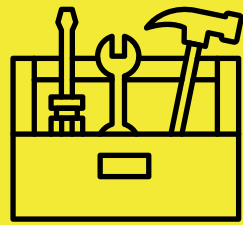
**STORAGE AND ABSORPTION OF CO<sub>2</sub>**



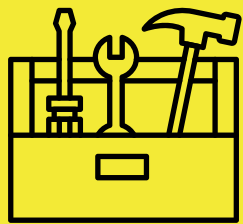
**INCREASE IN CIRCULARITY**



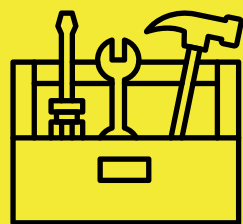
## FOREST RESILIENCE AND PROTECTION



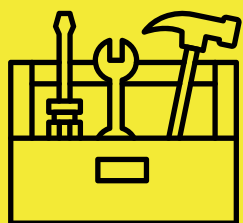
SUSTAINABLE FOREST MANAGEMENT



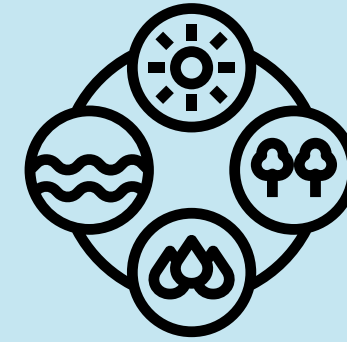
CERTIFICATION OF CHAIN OF CUSTODY



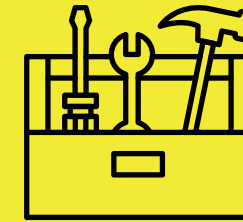
CARBON CREDITS



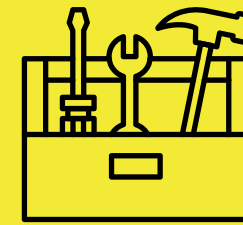
GUIDELINES FOR THE CASCADING USE OF WOOD



## ECOSYSTEM SERVICES PROTECTION AND RESTORATION



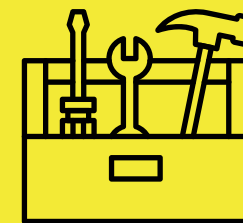
SUSTAINABLE FOREST MANAGEMENT



CERTIFICATION OF CHAIN OF CUSTODY



CARBON CREDITS



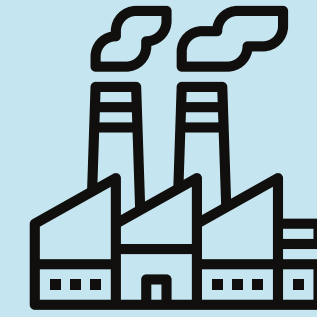
GUIDELINES FOR THE CASCADING USE OF WOOD



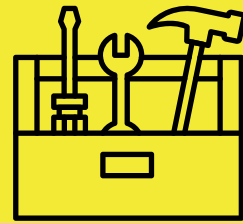
# TOOLS



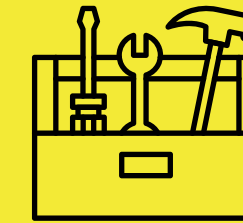
**REDUCTION OF ENVIRONMENTAL IMPACTS OF THE PRODUCTION PROCESS**



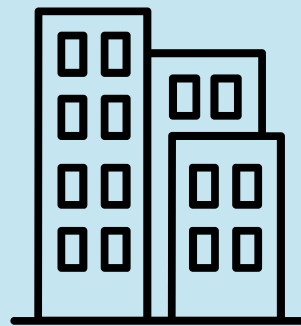
**REDUCTION OF ENVIRONMENTAL IMPACTS OF THE PRODUCT**



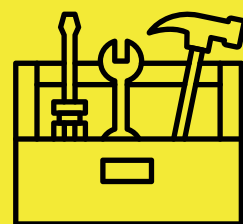
**ENVIRONMENTAL MANAGEMENT SYSTEMS**



**ECO-LABELS**

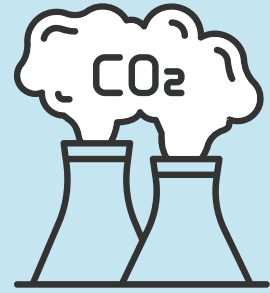


**REDUCTION OF ENVIRONMENTAL IMPACTS OF THE BUILDING**

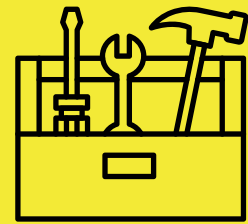


**BUILDINGS ENVIRONMENTAL CERTIFICATION**

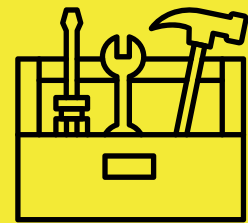




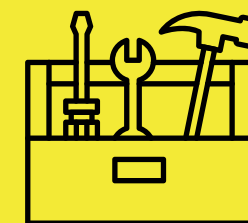
REDUCTION OF CO<sub>2</sub> EMISSION



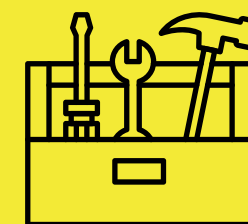
ENVIRONMENTAL MANAGEMENT SYSTEMS



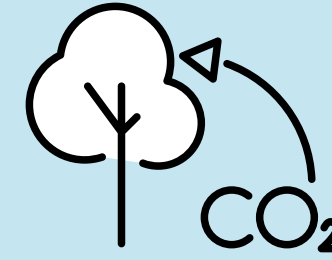
ECO-LABELS



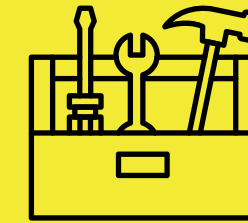
BUILDINGS ENVIRONMENTAL CERTIFICATION



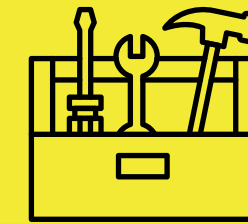
CARBON CREDITS



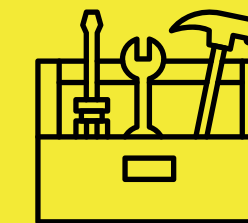
STORAGE AND ABSORPTION OF CO<sub>2</sub>



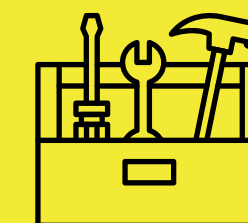
SUSTAINABLE FOREST MANAGEMENT



CERTIFICATION OF CHAIN OF CUSTODY



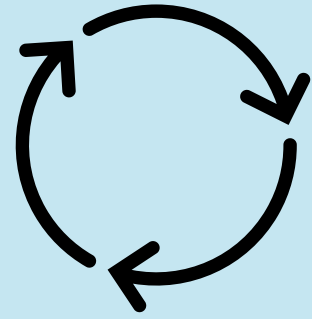
ECO-LABELS



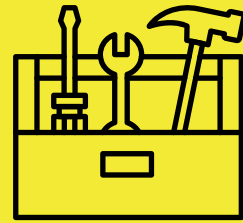
CARBON CREDITS



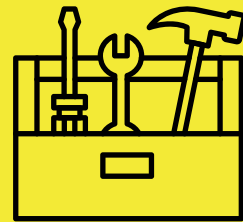
# TOOLS



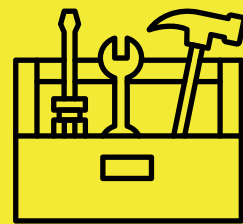
## INCREASE IN CIRCULARITY



**ENVIRONMENTAL  
MANAGEMENT SYSTEMS**



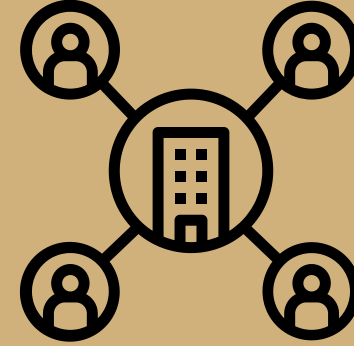
**ECO-LABELS**



**GUIDELINES FOR THE  
CASCADING USE OF WOOD**



**INCREASE CORPORATE AND CONSUMERS AWARENESS**



**ORGANIZATIONAL IMPROVEMENT**



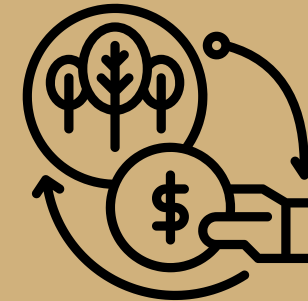
**ENSURE EFFECTIVE AND TRANSPARENT COMMUNICATION**



**IMPROVE THE ENVIRONMENTAL QUALITY OF THE PRODUCT**



**ACCESS NEW MARKETS**



**ENHANCEMENT OF ENVIRONMENTAL BENEFITS AND INCREASE IN PROFITABILITY**



**ACCESSIBILITY TO PUBLIC FUNDING OPPORTUNITIES**



# TOOLS



## INCREASE CORPORATE AND CONSUMERS AWARENESS



## ENSURE EFFECTIVE AND TRANSPARENT COMMUNICATION



**SUSTAINABLE FOREST MANAGEMENT**



**ENVIRONMENTAL MANAGEMENT SYSTEMS**



**CERTIFICATION OF CHAIN OF CUSTODY**



**ECO-LABELS**



**ENVIRONMENTAL MANAGEMENT SYSTEMS**



**CARBON CREDITS**



**BUILDINGS ENVIRONMENTAL CERTIFICATION**



**GUIDELINES FOR THE CASCADING USE OF WOOD**



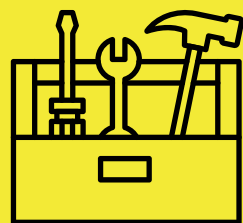
# TOOLS



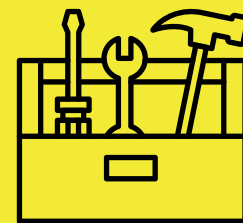
## ACCESS NEW MARKETS



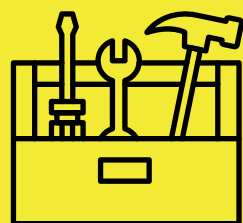
## ACCESSIBILITY TO PUBLIC FUNDING OPPORTUNITIES



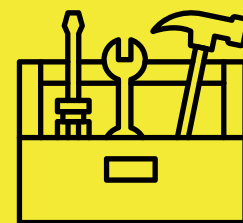
**SUSTAINABLE FOREST MANAGEMENT**



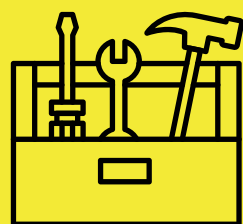
**SUSTAINABLE FOREST MANAGEMENT**



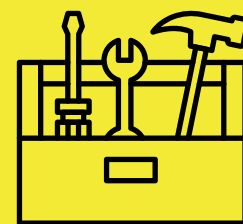
**CERTIFICATION OF CHAIN OF CUSTODY**



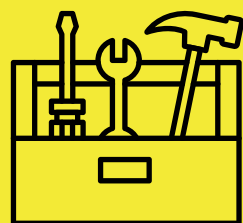
**CERTIFICATION OF CHAIN OF CUSTODY**



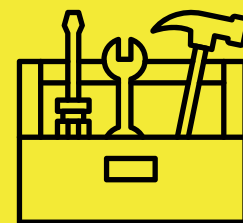
**ENVIRONMENTAL MANAGEMENT SYSTEMS**



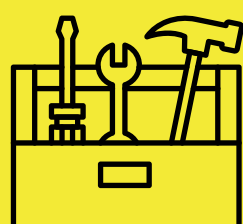
**ENVIRONMENTAL MANAGEMENT SYSTEMS**



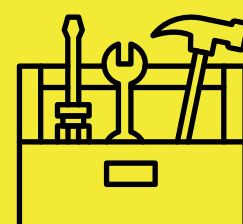
**BUILDINGS ENVIRONMENTAL CERTIFICATION**



**BUILDINGS ENVIRONMENTAL CERTIFICATION**



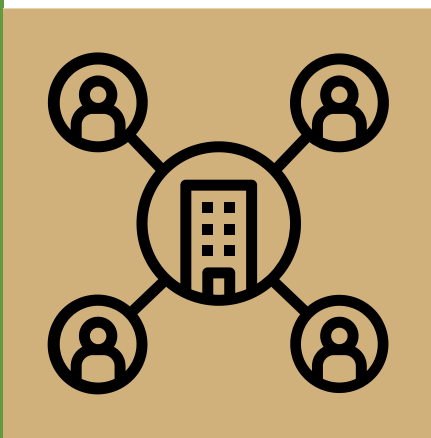
**ECO-LABELS**



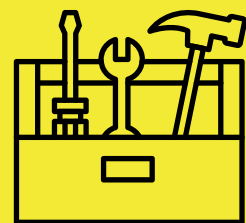
**ECO-LABELS**



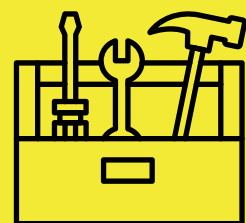
# TOOLS



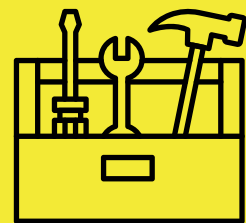
## ORGANIZATIONAL IMPROVEMENT



**SUSTAINABLE FOREST MANAGEMENT**



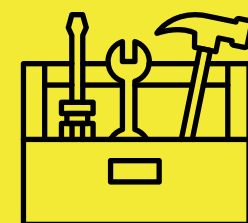
**CERTIFICATION OF CHAIN OF CUSTODY**



**ENVIRONMENTAL MANAGEMENT SYSTEMS**



## IMPROVE THE ENVIRONMENTAL QUALITY OF THE PRODUCT



**SUSTAINABLE FOREST MANAGEMENT**



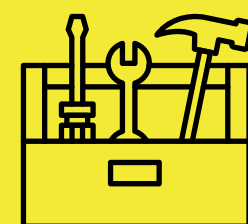
**CERTIFICATION OF CHAIN OF CUSTODY**



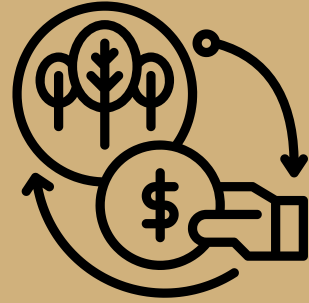
**ECO-LABELS**



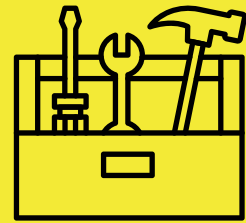
**BUILDINGS ENVIRONMENTAL CERTIFICATION**



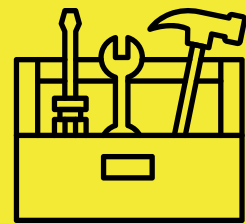
**GUIDELINES FOR THE CASCADING USE OF WOOD**



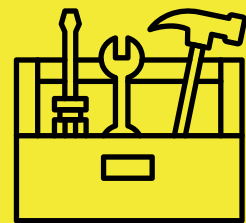
## ENHANCEMENT OF ENVIRONMENTAL BENEFITS AND INCREASE IN PROFITABILITY



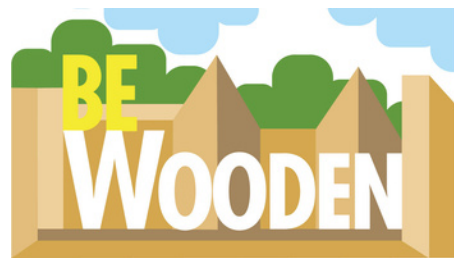
ECO-LABELS



BUILDINGS ENVIRONMENTAL CERTIFICATION



CARBON CREDITS



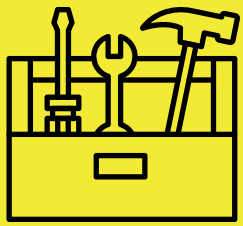
# TOOLS



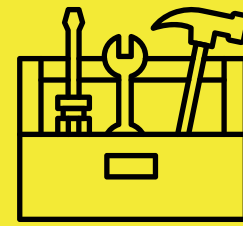




# TOOLS



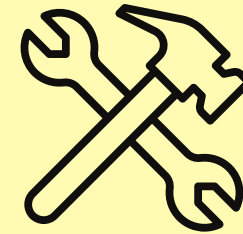
**SUSTAINABLE FOREST  
MANAGEMENT**



**CERTIFICATION OF  
CHAIN OF CUSTODY**



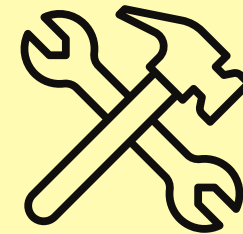
**PEFC CERTIFICATION**



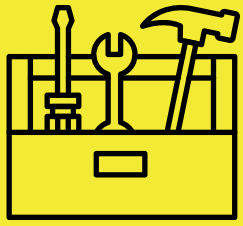
**PEFC CERTIFICATION**



**FSC<sup>®</sup> CERTIFICATION**



**FSC<sup>®</sup> CERTIFICATION**



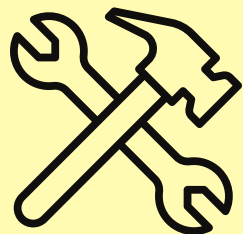
## **ECO-LABELS**



**EU ECOLABEL**



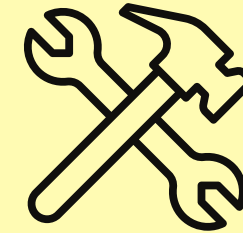
**EPD<sup>®</sup> (ENVIRONMENTAL  
PRODUCT DECLARATION)**



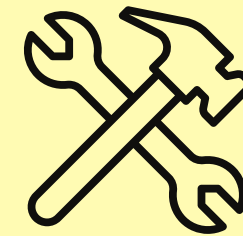
**CARBON FOOTPRINT**



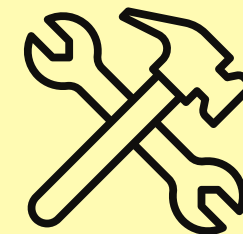
**MADE GREEN IN ITALY**



**EU-CRCF PRODUCTS**



**PEFC CERTIFICATION**



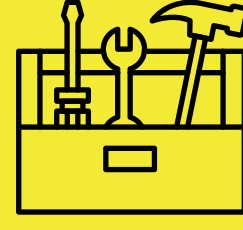
**FSC<sup>®</sup> CERTIFICATION**



# TOOLS



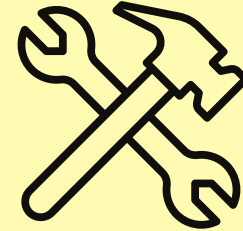
**BUILDINGS  
ENVIRONMENTAL  
CERTIFICATION**



**ENVIRONMENTAL  
MANAGEMENT SYSTEMS**



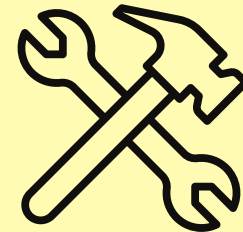
**LEED<sup>®</sup> RATING SYSTEM**



**EMAS (ECO-MANAGEMENT  
AND AUDIT SCHEME)**



**ITACA PROTOCOL**



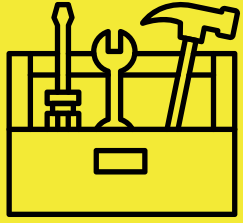
**ISO 14001 -  
ENVIRONMENTAL  
MANAGEMENT SYSTEM**



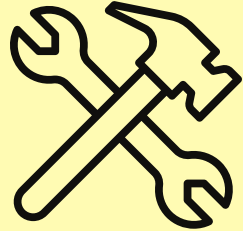
**BREEAM<sup>®</sup>**



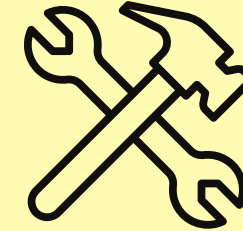
# TOOLS



## CARBON CREDITS



CREA CARBON CREDIT  
REGISTRY



PLAN VIVO



EU-CRCF REGULATION



VERRA-VCS



GOLD STANDARD<sup>®</sup>



PEFC CERTIFICATION



# PEFC

## PROGRAMME FOR ENDORSEMENT OF FOREST CERTIFICATION SCHEMES



### DESCRIPTION

THE **PEFC CERTIFICATION** IS AN INTERNATIONAL, INDEPENDENT, AND THIRD-PARTY CERTIFICATION SPECIFICALLY FOR THE FORESTRY SECTOR AND PRODUCTS (WOODEN AND NON-WOODEN) DERIVED FROM FORESTS AND PLANTATIONS.

THERE ARE 2 TYPES OF PEFC CERTIFICATION:

- **FOREST MANAGEMENT CERTIFICATION (FM):** ENSURES THAT A FOREST OR A FOREST PLANTATION IS MANAGED IN ACCORDANCE WITH RIGOROUS ENVIRONMENTAL AND ECONOMIC STANDARDS.
- **CHAIN OF CUSTODY CERTIFICATION (COC):** GUARANTEES THE TRACEABILITY OF MATERIALS SOURCED FROM WELL-MANAGED FORESTS, CONTROLLED SOURCES, RECYCLED MATERIALS, OR A COMBINATION OF THESE SOURCES



WEBSITE (PEFC ITALY)



FM CERTIFICATION



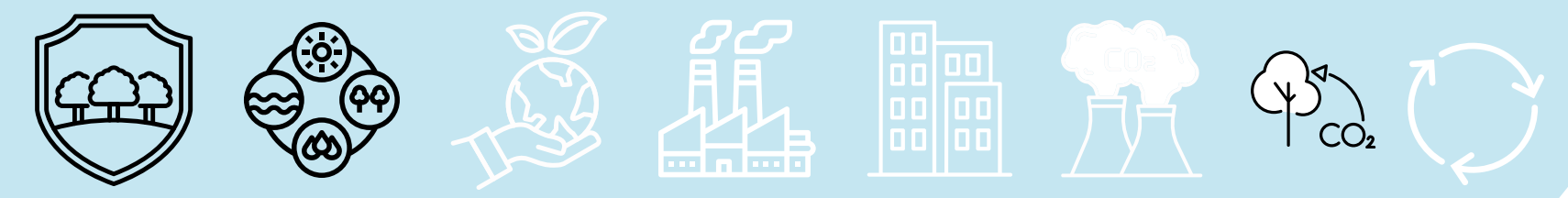
COC CERTIFICATION

VALIDATOR



PEFC ITALY

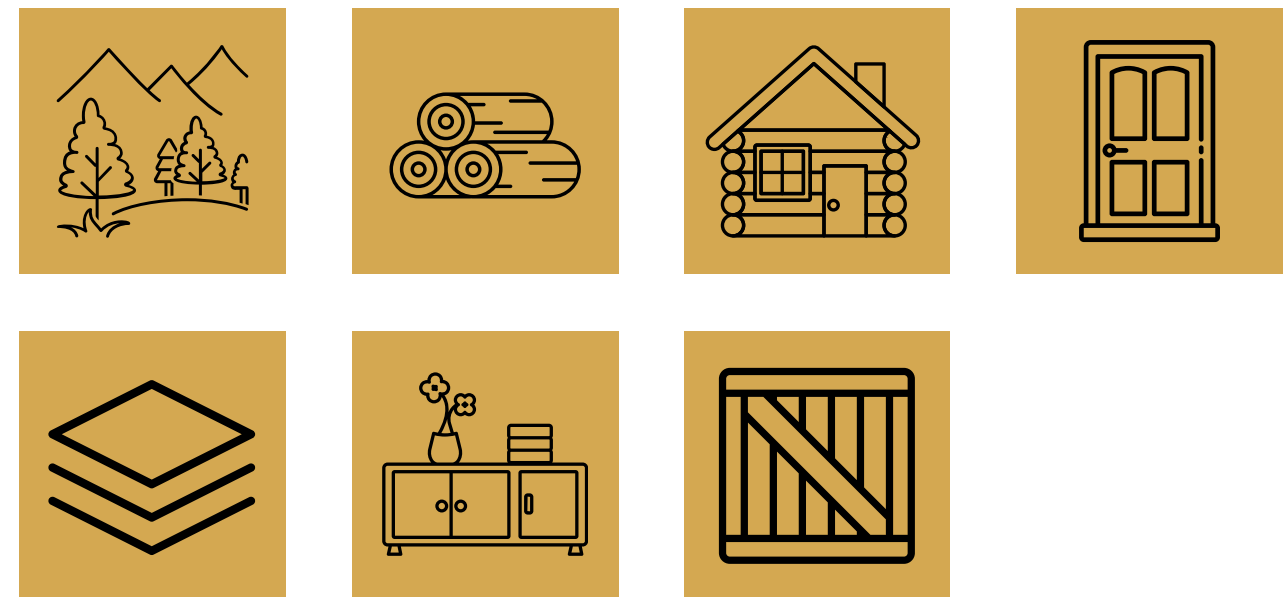
### ENVIRONMENTAL BENEFITS ⓘ

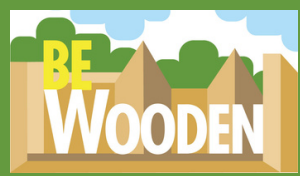


### BUSINESS OBJECTIVES ⓘ



### WOOD SUPPLY CHAIN PHASES ⓘ





# FSC® CERTIFICATION



# FSC® FOREST STEWARDSHIP COUNCIL®



## DESCRIPTION

THE **FSC CERTIFICATION** IS AN INTERNATIONAL, INDEPENDENT, AND THIRD-PARTY CERTIFICATION SPECIFIC TO THE FORESTRY SECTOR AND PRODUCTS (WOODEN AND NON-WOODEN) DERIVED FROM FORESTS.

THERE ARE 2 TYPES OF FSC CERTIFICATION:

- **FOREST MANAGEMENT CERTIFICATION (FM):** ENSURES THAT A FOREST OR A FOREST PLANTATION IS MANAGED IN ACCORDANCE WITH RIGOROUS ENVIRONMENTAL AND ECONOMIC STANDARDS.
- **CHAIN OF CUSTODY CERTIFICATION (COC):** GUARANTEES THE TRACEABILITY OF MATERIALS SOURCED FROM WELL-MANAGED FORESTS, CONTROLLED SOURCES, RECYCLED MATERIALS, OR A COMBINATION OF THESE SOURCES.



WEBSITE (FSC ITALY)



FM CERTIFICATION



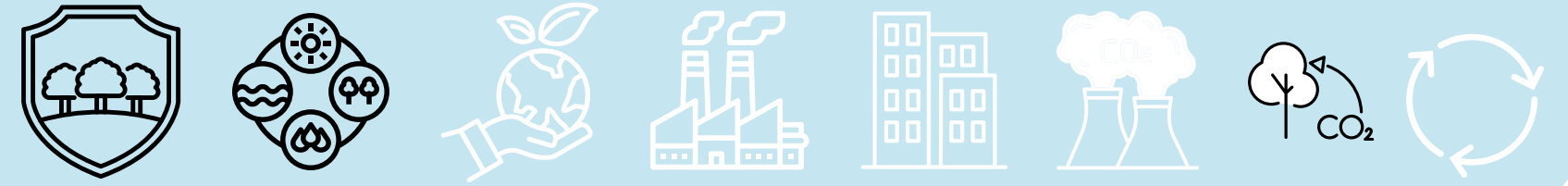
COC CERTIFICATION

## VALIDATOR



FSC ITALY

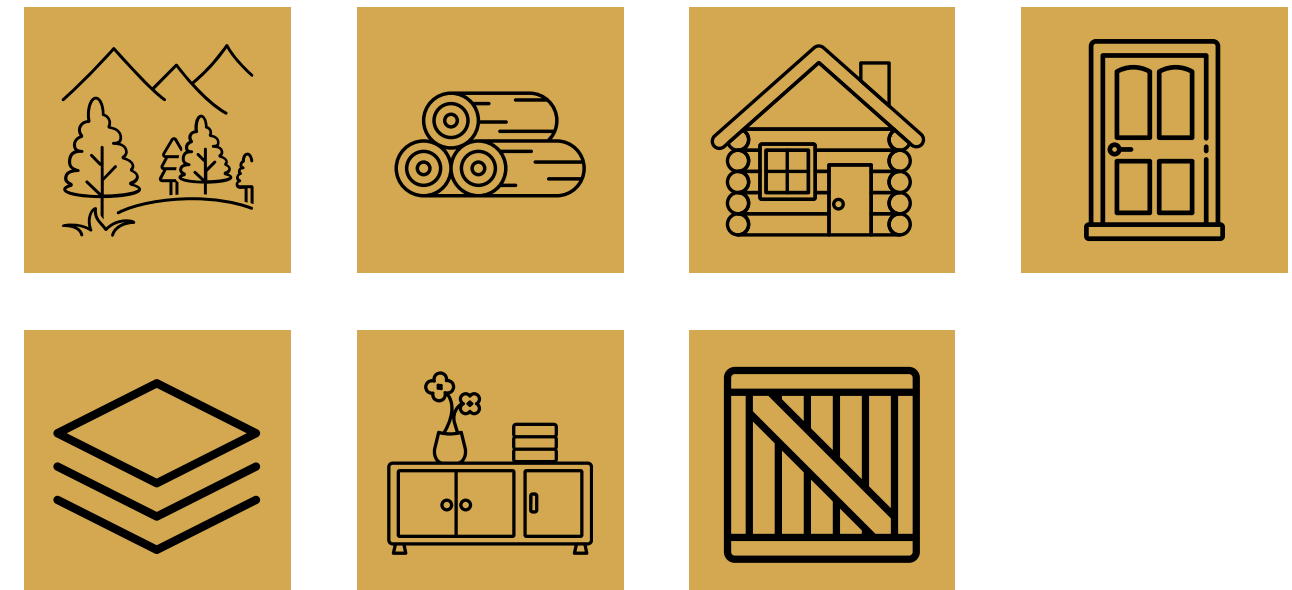
## ENVIRONMENTAL BENEFITS ⓘ



## BUSINESS OBJECTIVES ⓘ



## WOOD SUPPLY CHAIN PHASES ⓘ





# EMAS

## ECO-MANAGEMENT AND AUDIT SCHEME



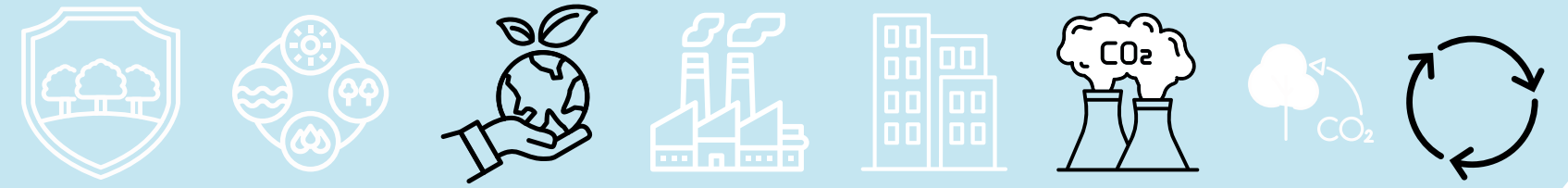
Performance,  
Credibility,  
Transparency

### DESCRIPTION

EMAS REGISTRATION IS A VOLUNTARY ENVIRONMENTAL MANAGEMENT SYSTEM THAT ORGANIZATIONS, BOTH PRIVATE AND PUBLIC, CAN JOIN IF THEY WISH TO EVALUATE OR IMPROVE THEIR ENVIRONMENTAL PERFORMANCE AND PROVIDE THE PUBLIC WITH INFORMATION ABOUT IT.

THE REGULATION AIMS TO IMPROVE THE ENVIRONMENTAL ASPECTS OF ORGANIZATIONS THROUGH COMPLIANCE WITH CURRENT ENVIRONMENTAL LEGISLATION, AS WELL AS CONTINUOUS IMPROVEMENT OF ENVIRONMENTAL PERFORMANCE, INVOLVEMENT OF STAKEHOLDERS (EMPLOYEES AND SUPPLIERS OF PRODUCTS AND SERVICES), AND COMMUNICATION AND TRANSPARENCY WITH INSTITUTIONS AND THE PUBLIC (CITIZENS, ENVIRONMENTAL ORGANIZATIONS, ETC.).

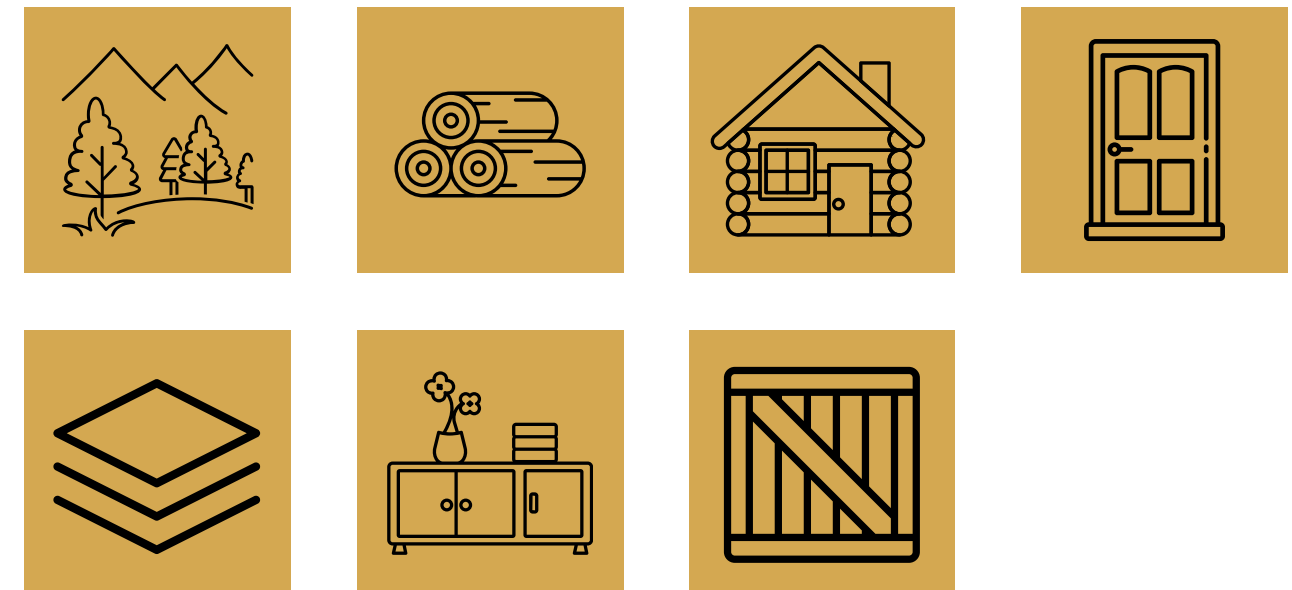
### ENVIRONMENTAL BENEFITS ⓘ



### BUSINESS OBJECTIVES ⓘ



### WOOD SUPPLY CHAIN PHASES ⓘ



WEBSITE



REG.(EC) N.1221/2009  
(EMAS III)



DECISION (EU)  
2023/2463

VALIDATOR



ECOLABEL ECOAUDIT  
COMMITTEE



EMAS





# ISO 14001:2015

## ENVIRONMENTAL MANAGEMENT SYSTEMS



### DESCRIPTION

ISO 14001 IS AN INTERNATIONAL VOLUNTARY STANDARD APPLICABLE TO ANY TYPE OF PUBLIC OR PRIVATE ORGANIZATION, SPECIFYING THE REQUIREMENTS FOR AN ENVIRONMENTAL MANAGEMENT SYSTEM.

TO DEFINE A SYSTEM THAT COMPLIES WITH ISO 14001, IT IS NECESSARY TO:

- CONDUCT AN ENVIRONMENTAL ANALYSIS, MEANING GAINING A THOROUGH UNDERSTANDING OF THE ENVIRONMENTAL ASPECTS (EMISSIONS, RESOURCE USE, ETC.) THAT AN ORGANIZATION MUST EFFECTIVELY MANAGE, UNDERSTANDING THE LEGISLATIVE FRAMEWORK AND APPLICABLE REQUIREMENTS FOR THE COMPANY, AND ASSESSING THE SIGNIFICANCE OF THE IMPACTS.
- DEFINE A COMPANY POLICY.
- DEFINE SPECIFIC ENVIRONMENTAL RESPONSIBILITIES.
- DEFINE, IMPLEMENT, AND MAINTAIN ACTIVITIES, PROCEDURES, AND RECORDS AS REQUIRED BY ISO 14001.

### VALIDATOR

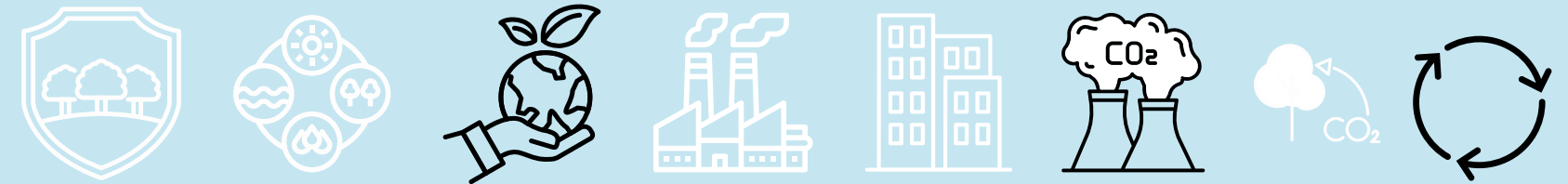


ISO 14001:2015 (STORE)



INTERNATIONAL STANDARD FOR ORGANIZATION

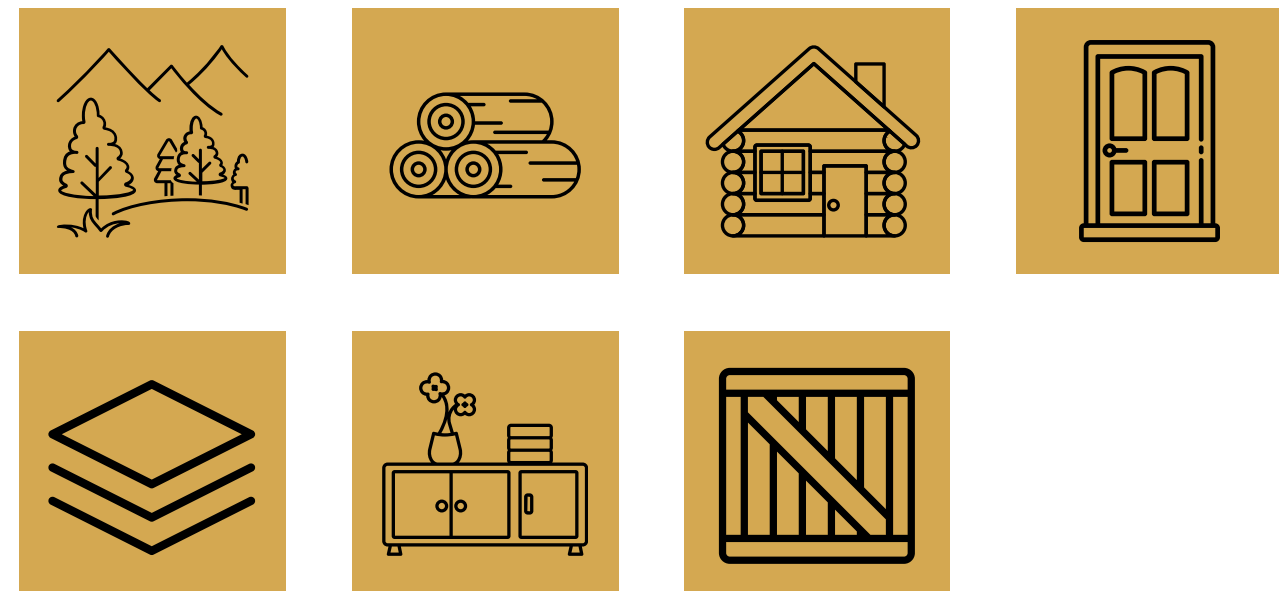
### ENVIRONMENTAL BENEFITS ⓘ



### BUSINESS OBJECTIVES ⓘ



### WOOD SUPPLY CHAIN PHASES ⓘ



ISO 14001:2015







# EU ECOLABEL



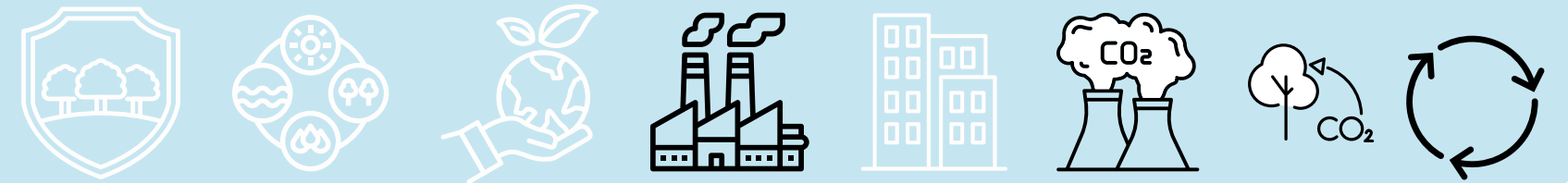
EU ECOLABEL

## DESCRIPTION

THE **EU ECOLABEL** IS A VOLUNTARY ENVIRONMENTAL PRODUCT LABELING SYSTEM AIMED AT PROMOTING THE DESIGN, PRODUCTION, MARKETING, AND USE OF PRODUCTS WITH A LOWER ENVIRONMENTAL IMPACT **THROUGHOUT THEIR ENTIRE LIFE CYCLE.**

THIS IS BASED ON CRITERIA THAT EVALUATE ENVIRONMENTAL IMPACTS SUCH AS ENERGY CONSUMPTION, POLLUTION (WATER, AIR, NOISE, SOIL), AND WASTE MANAGEMENT. IT IS AN ENVIRONMENTAL EXCELLENCE MARK, MEANING IT HELPS CONSUMERS RECOGNIZE PRODUCTS OR SERVICES THAT HAVE A LOWER ENVIRONMENTAL IMPACT WHILE MAINTAINING THE SAME PERFORMANCE AND QUALITY AS OTHERS.

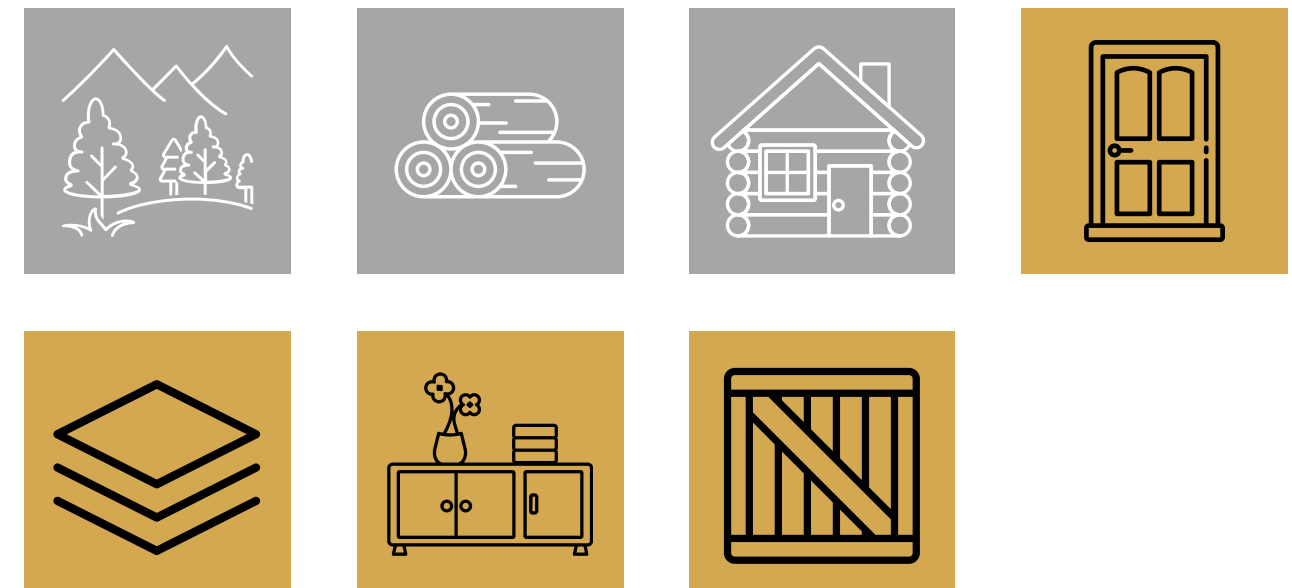
## ENVIRONMENTAL BENEFITS ⓘ



## BUSINESS OBJECTIVES ⓘ



## WOOD SUPPLY CHAIN PHASES ⓘ



## VALIDATOR



WEBSITE



REG.(EC) N.66/2010





MADE GREEN IN ITALY



# MADE GREEN IN ITALY NATIONAL SCHEME



## DESCRIPTION

THE "MADE GREEN IN ITALY" LABEL AIMS TO ENHANCE THE MARKET VALUE OF ITALIAN PRODUCTS WITH GOOD OR EXCELLENT ENVIRONMENTAL PERFORMANCE (GUARANTEED BY A SCIENTIFICALLY ROBUST SYSTEM). ITS LOGO HELPS CONSUMERS EASILY RECOGNIZE THESE PRODUCTS, ENCOURAGING MORE CONSCIOUS CHOICES.

THE QUANTIFICATION OF A PRODUCT'S ENVIRONMENTAL PERFORMANCE IS BASED ON A COMPLETE PEF (PRODUCT ENVIRONMENTAL FOOTPRINT) STUDY, VERIFIED AND VALIDATED BY AN INDEPENDENT THIRD-PARTY ORGANIZATION.

THERE ARE **THREE PERFORMANCE CLASSES**: "A" (VALUE HIGHER THAN THE BENCHMARK), "B" (VALUE CLOSE TO THE BENCHMARK), AND "C" (VALUE LOWER THAN THE BENCHMARK). ONLY PRODUCTS IN CLASS A AND THOSE IN CLASS B (WITH A COMMITMENT FROM THE COMPANY TO IMPROVE PERFORMANCE) ARE ELIGIBLE TO USE THE LOGO.



ITALIAN MINISTRY OF THE ENVIRONMENT (MASE)



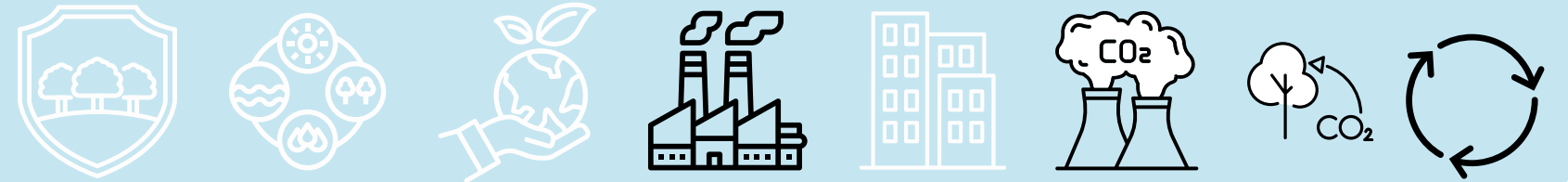
REGOLAMENTO D.M. 56/2018

## VALIDATOR



ITALIAN MINISTRY OF THE ENVIRONMENT (MASE)

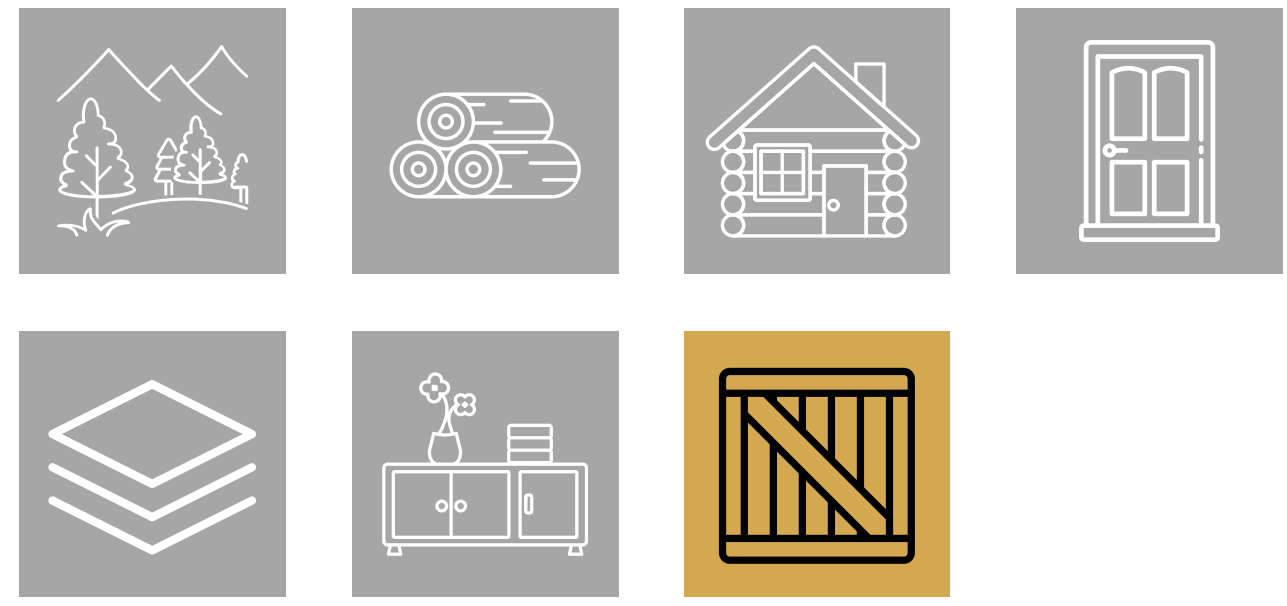
## ENVIRONMENTAL BENEFITS ⓘ



## BUSINESS OBJECTIVES ⓘ



## WOOD SUPPLY CHAIN PHASES ⓘ





EPD<sup>®</sup> - ENVIRONMENTAL PRODUCT DECLARATION



# EPD<sup>®</sup>

## ENVIRONMENTAL PRODUCT DECLARATION



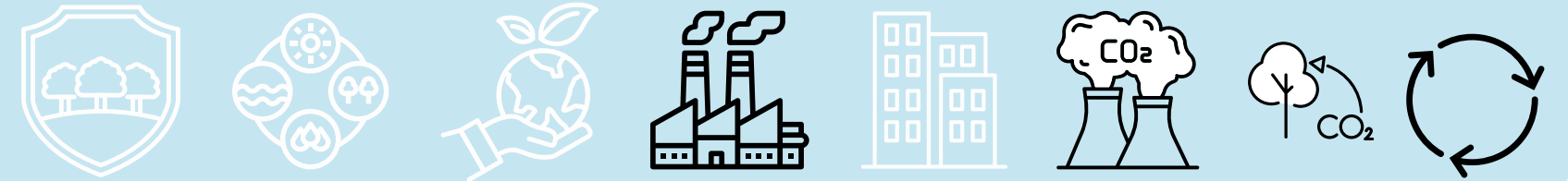
THE INTERNATIONAL EPD<sup>®</sup> SYSTEM

### DESCRIPTION

THE EPD (ENVIRONMENTAL PRODUCT DECLARATION) IS A VOLUNTARY CERTIFICATION THAT HIGHLIGHTS THE ENVIRONMENTAL PERFORMANCE OF A PRODUCT, PROCESS, OR SERVICE TO IMPROVE ITS SUSTAINABILITY.

EPD IS DEVELOPED IN ACCORDANCE WITH THE UNI ISO 14025:2006 STANDARD (TYPE III ENVIRONMENTAL LABEL); THE ENVIRONMENTAL INFORMATION PROVIDED IS BASED ON A LIFE CYCLE ASSESSMENT (LCA), IN COMPLIANCE WITH THE ISO 14040 SERIES STANDARDS.

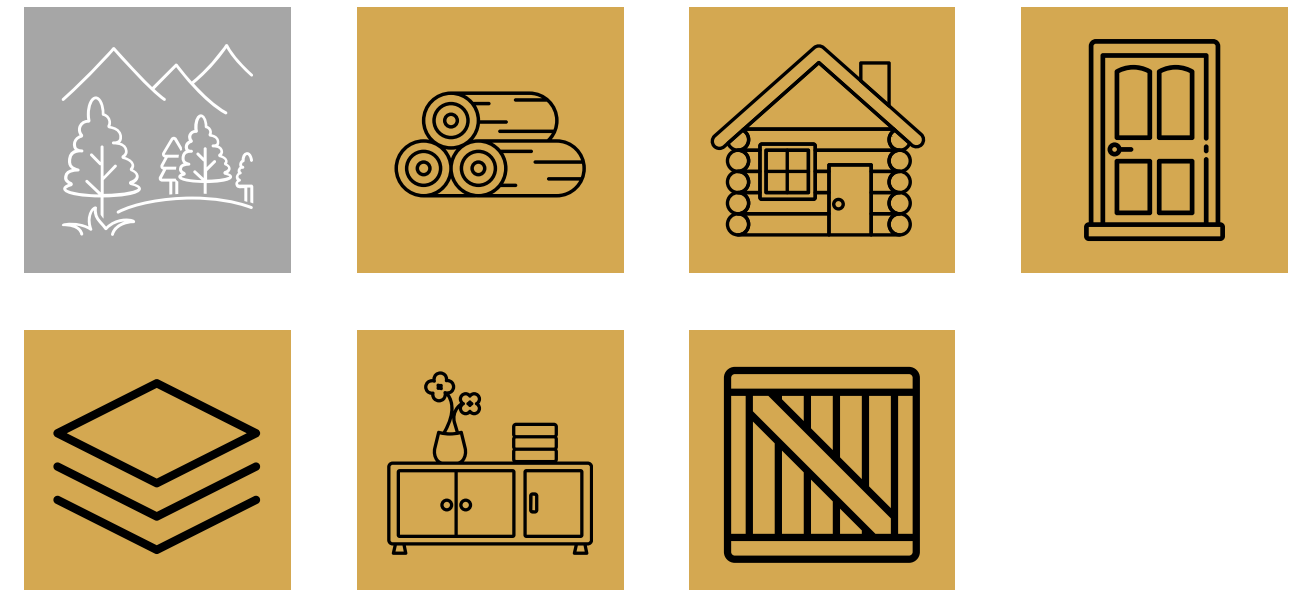
### ENVIRONMENTAL BENEFITS ⓘ



### BUSINESS OBJECTIVES ⓘ



### WOOD SUPPLY CHAIN PHASES ⓘ



### VALIDATOR



WEBSITE



INTERNATIONAL EPD SYSTEM



ISO 14067:2018

CARBON FOOTPRINT OF PRODUCTS



# ISO 14067:2018 GREENHOUSE GASES - CARBON FOOTPRINT OF PRODUCTS



## DESCRIPTION

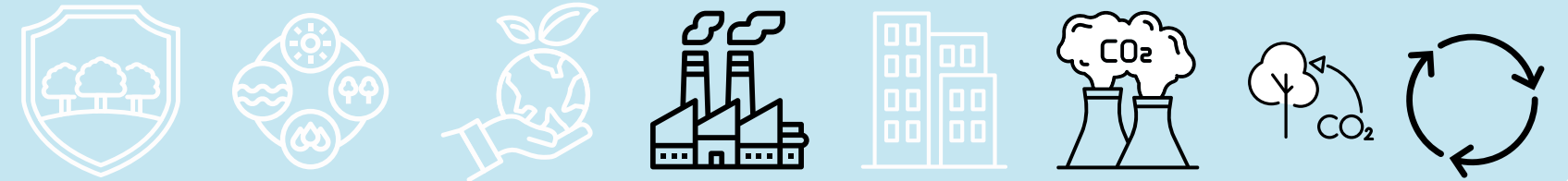
ISO 14067 DEFINES THE PRINCIPLES, REQUIREMENTS, AND GUIDELINES FOR THE QUANTIFICATION AND REPORTING OF THE PRODUCT CARBON FOOTPRINT (PCF), BASED ON INTERNATIONAL STANDARDS FOR LCA STUDIES (ISO 14040 AND ISO 14044).

THIS STANDARD PROVIDES ORGANIZATIONS WITH A METHOD TO CALCULATE THE CARBON FOOTPRINT OF THEIR PRODUCTS (DEFINED AS GOODS OR SERVICES) AND OFFERS THE OPPORTUNITY TO BETTER UNDERSTAND HOW TO REDUCE IT.

WHILE BASED ON THE LCA APPROACH, ISO 14067 FOCUSES SOLELY ON THE IMPACT CATEGORY OF "CLIMATE CHANGE."

THE CARBON FOOTPRINT IS UNDERSTOOD AS THE SUM OF GREENHOUSE GAS (GHG) EMISSIONS AND REMOVALS THROUGHOUT THE LIFE CYCLE OF A PRODUCT.

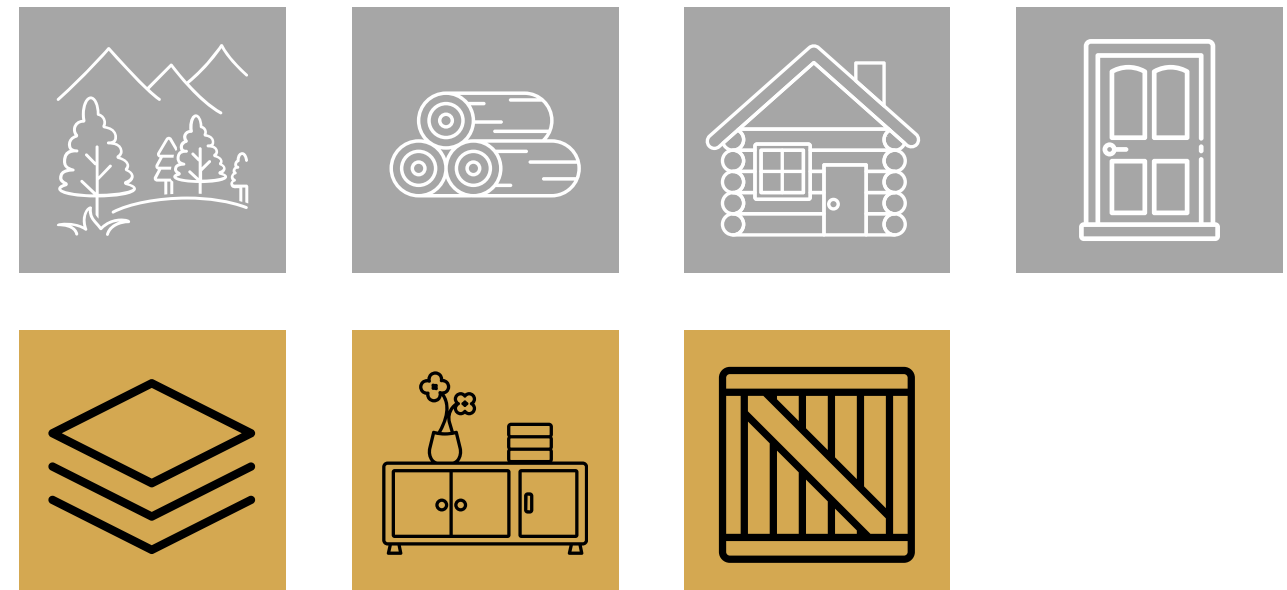
## ENVIRONMENTAL BENEFITS ⓘ



## BUSINESS OBJECTIVES ⓘ



## WOOD SUPPLY CHAIN PHASES ⓘ



## VALIDATOR



ISO 14067:2018  
(STORE)



INTERNATIONAL  
STANDARD FOR  
ORGANIZATION



EU-CRCF PRODUCTS



# EU-CRCF (PRODUCTS) REG.(EU) 2024/3012 CARBON REMOVAL AND CARBON FARMING



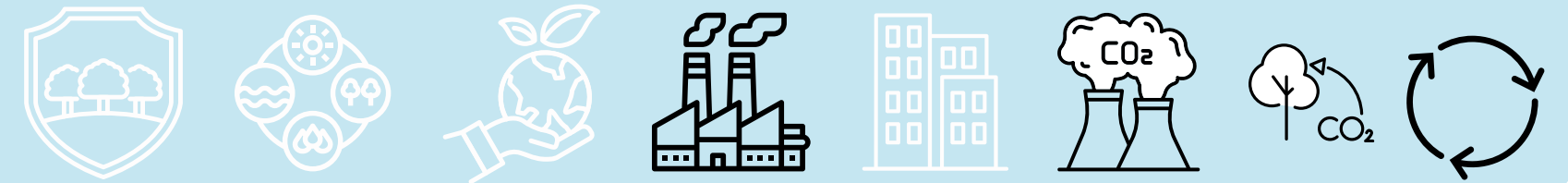
## DESCRIPTION

THE OBJECTIVE OF THE SCHEME IS TO FACILITATE AND ENCOURAGE THE ESTABLISHMENT, BY OPERATORS OR GROUPS OF OPERATORS, OF **PERMANENT CARBON SEQUESTRATION, CARBON FARMING, AND CARBON STORAGE IN PRODUCTS**, AS AN ADDITION TO LONG-TERM EMISSION REDUCTIONS ACROSS ALL SECTORS, IN ORDER TO ACHIEVE EUROPEAN GOALS AND TARGETS.

THE SCHEME REQUIRES THE PUBLIC DISCLOSURE OF PERMANENT CARBON SEQUESTRATION, CARBON FARMING, AND CARBON STORAGE IN PRODUCTS THROUGH THE CREATION OF A UNION REGISTRY.

FOR **STORAGE IN PRODUCTS**, IT REFERS TO **PRACTICES OR PROCESSES THAT CAPTURE AND STORE ATMOSPHERIC OR BIOGENIC CARBON FOR AT LEAST 35 YEARS IN LONG-LASTING PRODUCTS**. THESE PRACTICES MUST ALLOW ON-SITE MONITORING OF STORED CARBON AND BE CERTIFIED THROUGHOUT THE MONITORING PERIOD.

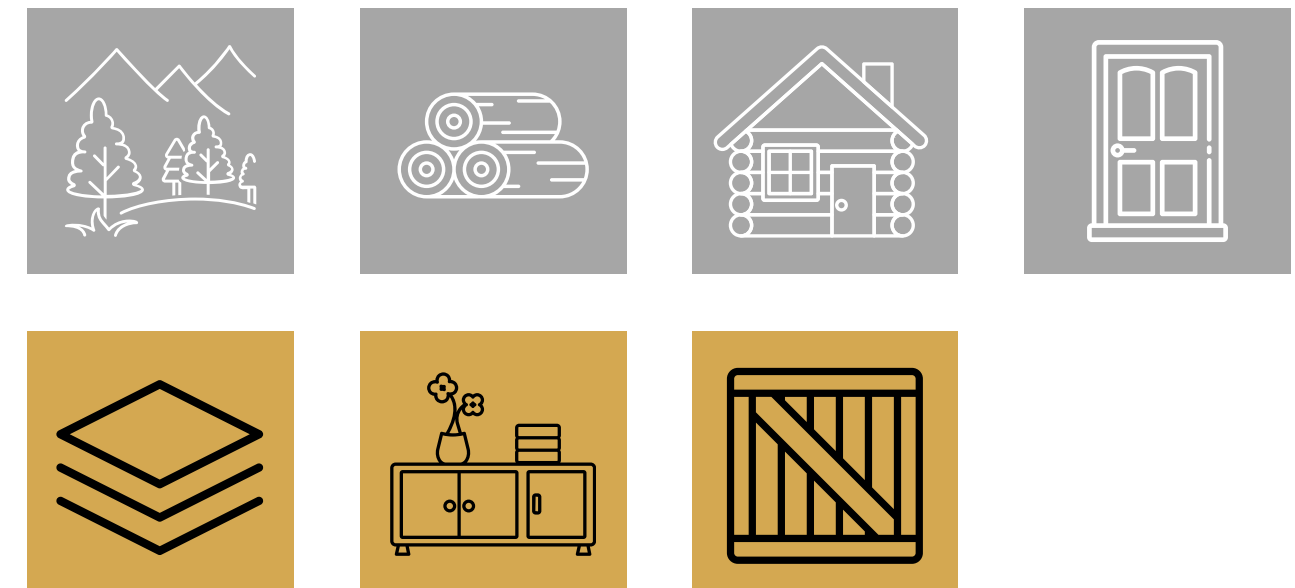
## ENVIRONMENTAL BENEFITS ⓘ



## BUSINESS OBJECTIVES ⓘ



## WOOD SUPPLY CHAIN PHASES ⓘ



## VALIDATOR



CARBON REMOVALS AND CARBON FARMING (EU WEBSITE)



EUROPEAN COMMISSION DG ENERGY, CLIMATE CHANGE, ENVIRONMENT



REG. (EU) 2024/3012



LEED®  
RATING SYSTEMS



# LEED® RATING SYSTEMS

## LEADERSHIP IN ENERGY & ENVIRONMENTAL DESIGN



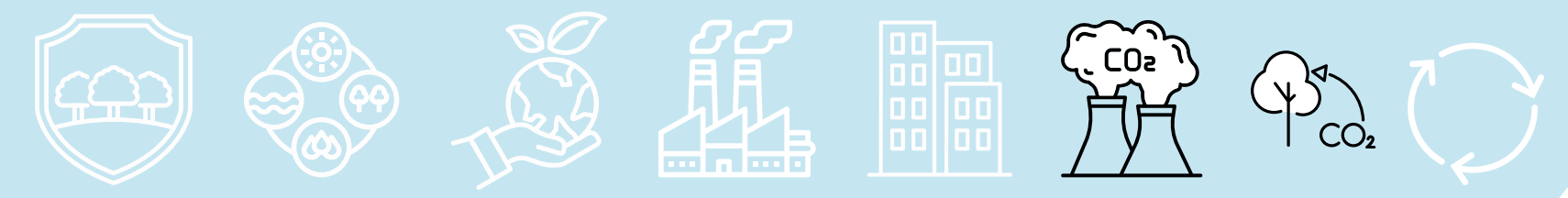
### DESCRIPTION

LEED IS A VOLUNTARY SYSTEM DEVELOPED BY THE U.S. GREEN BUILDING COUNCIL. IT IS CONSENSUS-BASED AND FOCUSES ON THE DESIGN, CONSTRUCTION, AND MANAGEMENT OF SUSTAINABLE BUILDINGS AND HIGH-PERFORMANCE AREAS, AND IS INCREASINGLY BEING ADOPTED INTERNATIONALLY.

LEED CAN BE APPLIED TO ALL TYPES OF BUILDINGS AND PROMOTES AN INTEGRATED DESIGN SYSTEM THAT ADDRESSES THE ENTIRE BUILDING.

THE AVAILABLE CERTIFICATION STANDARDS (RATING SYSTEMS) ARE CLASSIFIED BASED ON THE TYPE OF BUILDING TO BE CERTIFIED.

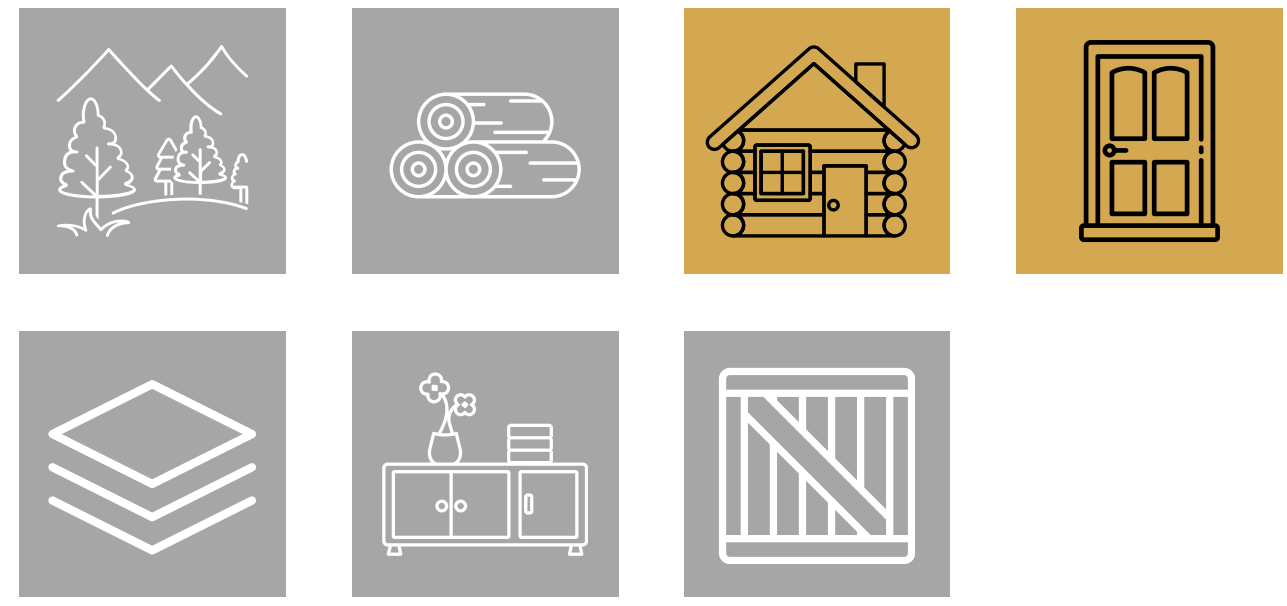
### ENVIRONMENTAL BENEFITS ⓘ



### BUSINESS OBJECTIVES ⓘ



### WOOD SUPPLY CHAIN PHASES ⓘ



U.S. GREEN BUILDING COUNCIL



DOCUMENTI E RISORSE (ITA)

### VALIDATOR



GREEN BUILDING COUNCIL ITALIA



ITACA  
PROTOCOL



# ITACA PROTOCOL

## FOR THE EVALUATION OF THE ENVIRONMENTAL SUSTAINABILITY OF BUILDINGS

### PDR UNI 13.0:2023/13.1:2023/13.2:2023

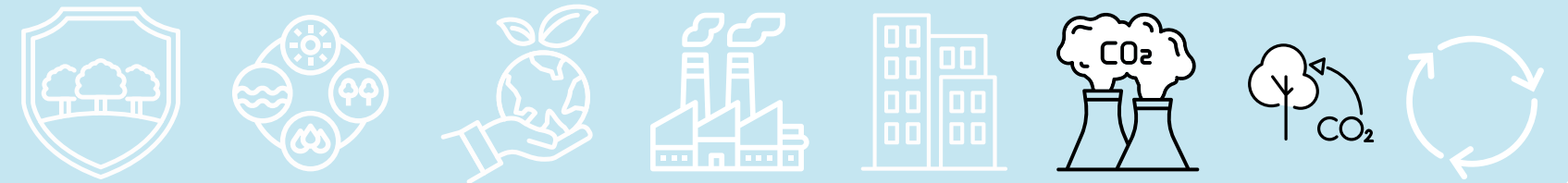


### DESCRIPTION

THE ITACA PROTOCOL IS AN EVALUATION TOOL FOR ASSESSING THE LEVEL OF ENERGY AND ENVIRONMENTAL SUSTAINABILITY OF BUILDINGS AND URBAN AREAS. IT ALLOWS FOR THE VERIFICATION OF A BUILDING'S PERFORMANCE NOT ONLY IN TERMS OF ENERGY CONSUMPTION AND EFFICIENCY BUT ALSO CONSIDERING ITS IMPACT ON THE ENVIRONMENT AND HUMAN HEALTH, THUS PROMOTING THE CREATION OF MORE INNOVATIVE AND SUSTAINABLE BUILDINGS.

THE PROTOCOL ALSO ENSURES THE OBJECTIVITY OF THE EVALUATION BY USING INDICATORS AND VERIFICATION METHODS THAT COMPLY WITH TECHNICAL STANDARDS AND RELEVANT NATIONAL LAWS.

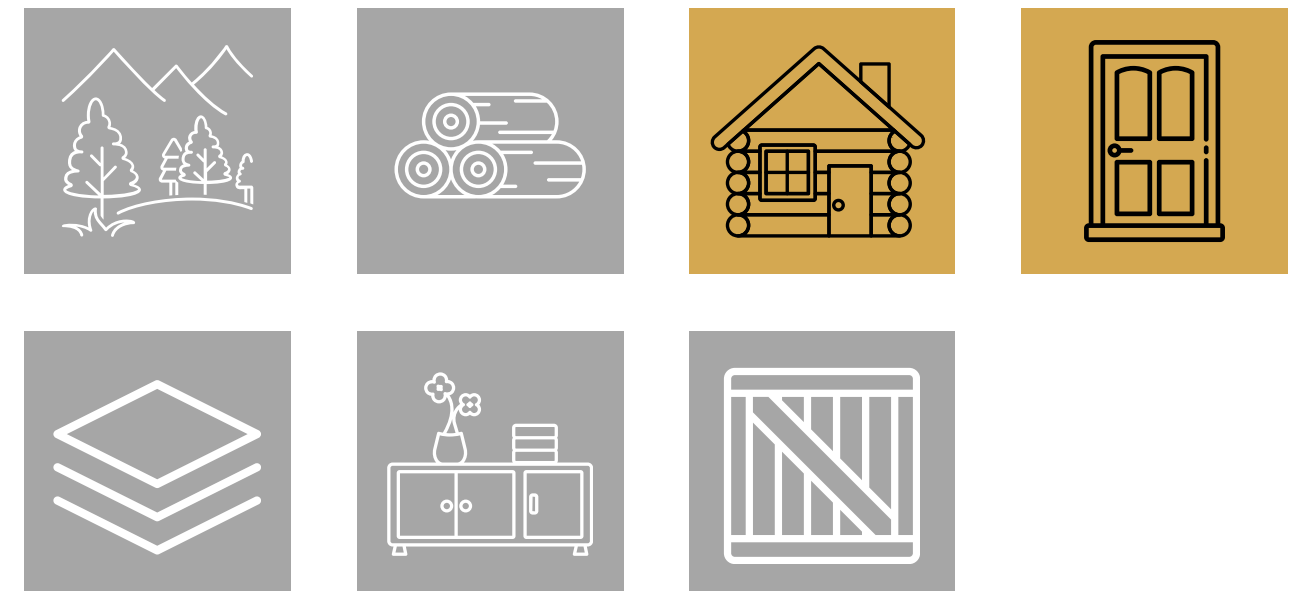
### ENVIRONMENTAL BENEFITS ⓘ



### BUSINESS OBJECTIVES ⓘ



### WOOD SUPPLY CHAIN PHASES ⓘ



### VALIDATOR



ISTITUTO PER L'INNOVAZIONE E TRASPARENZA DEGLI APPALTI E LA COMPATIBILITÀ AMBIENTALE



ITACA - ENVIRONMENTAL SUSTAINABILITY



PDR UNI 13 ENVIRONMENTAL SUSTAINABILITY OF BUILDINGS



BREEM®



# BREEM®

## BUILDING RESEARCH ESTABLISHMENT ENVIRONMENTAL METHOD

### DESCRIPTION

BREEM IS AN ENVIRONMENTAL **SUSTAINABILITY ASSESSMENT METHODOLOGY** DEVELOPED IN 1988 BY THE BUILDING RESEARCH ESTABLISHMENT (BRE).

IT IS A CERTIFICATION DESIGNED TO **MONITOR, EVALUATE, AND CERTIFY THE SUSTAINABILITY OF BUILDINGS.**

TO OBTAIN BREEM CERTIFICATION, IT IS NECESSARY TO ADOPT **SUSTAINABLE PRACTICES** NOT ONLY DURING THE DESIGN AND CONSTRUCTION PHASES OF BUILDINGS BUT ALSO THROUGHOUT SUBSEQUENT MANAGEMENT AND MAINTENANCE PROCESSES. THE BREEM METHOD CAN BE APPLIED TO CERTIFY NEW CONSTRUCTIONS AND RENOVATION PROJECTS.



WEBSITE



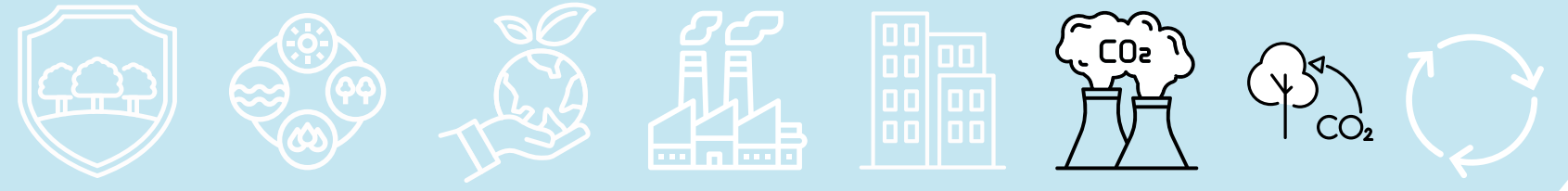
RESOURCES AND DOCUMENTS

### VALIDATOR



BUILDING RESEARCH ESTABLISHMENT

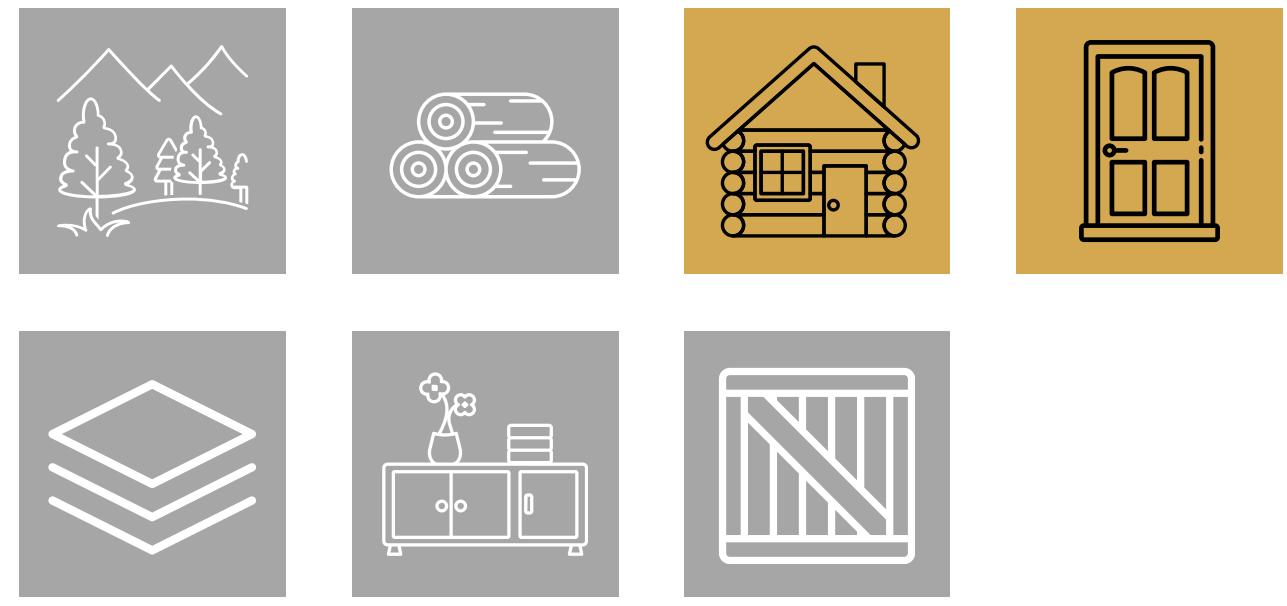
### ENVIRONMENTAL BENEFITS ⓘ



### BUSINESS OBJECTIVES ⓘ



### WOOD SUPPLY CHAIN PHASES ⓘ







PUBLIC CARBON CREDITS REGISTRY



# PUBLIC CARBON CREDITS REGISTRY CREA

## DESCRIPTION

THE **PUBLIC REGISTRY OF CARBON CREDITS** GENERATED VOLUNTARILY BY THE NATIONAL AGROFORESTRY SECTOR WAS ESTABLISHED UNDER LEGISLATIVE DECREE 13/2023 (CONVERTED INTO LAW NO. 41 OF 21.04.2023).

THE SCHEME AIMS TO PROMOTE **SUSTAINABLE AGRICULTURAL AND FORESTRY MANAGEMENT PRACTICES** THAT ENHANCE THE ABILITY TO ABSORB ATMOSPHERIC CARBON.

SPECIFIC **GUIDELINES** FOR ELIGIBILITY FOR REGISTRATION IN THE REGISTRY ARE SET TO BE ESTABLISHED SOON AND WILL DEFINE THE CRITERIA FOR THE ESTABLISHMENT OF THE REGISTRY AND THE CERTIFICATION METHODS FOR THE CREDITS.

## VALIDATOR

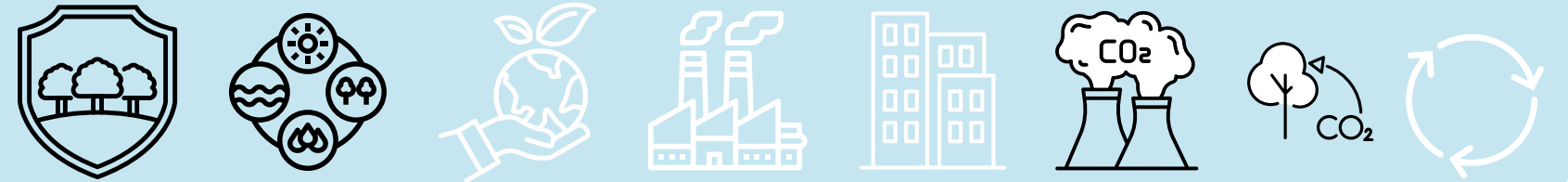


D.L 24.02.2023 N.13



CREA - COUNCIL FOR AGRICULTURAL RESEARCH AND ECONOMICS

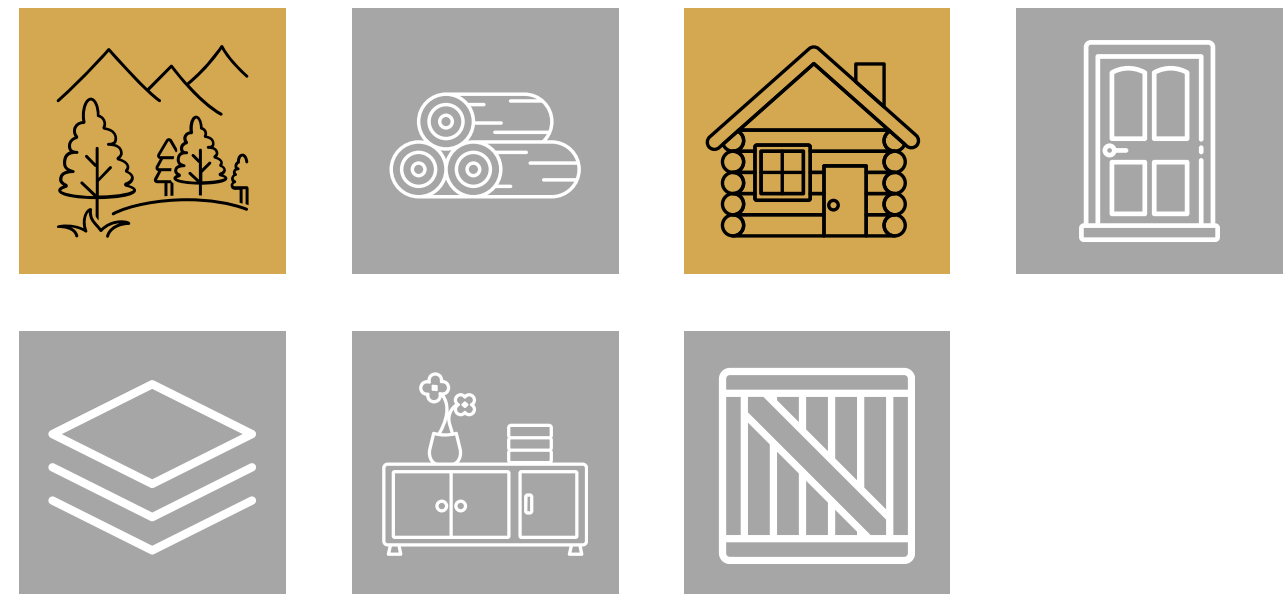
## ENVIRONMENTAL BENEFITS ⓘ



## BUSINESS OBJECTIVES ⓘ



## WOOD SUPPLY CHAIN PHASES ⓘ





VERRA - VCS



# VERRA - VCS

## VERIFIED CARBON STANDARD



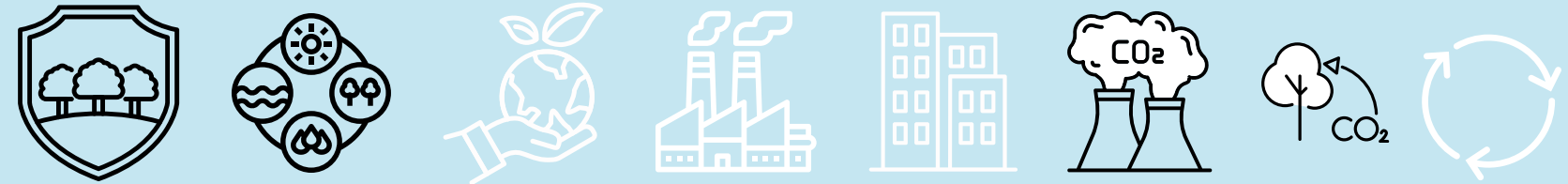
### Verified Carbon Standard

### DESCRIPTION

VERRA IS THE LEADING GLOBAL "CARBON STANDARD" AND AIMS TO SUPPORT SUSTAINABLE DEVELOPMENT GOALS.

THE **VERIFIED CARBON STANDARD (VCS) PROGRAM** ALLOWS ELIGIBLE AND CERTIFIED PROJECTS TO TRANSFORM CONTRIBUTIONS TO GREENHOUSE GAS (GHG) EMISSION REDUCTIONS INTO **TRADABLE CARBON CREDITS (VERIFIED CARBON UNITS - VCU)**.

### ENVIRONMENTAL BENEFITS ⓘ



### BUSINESS OBJECTIVES ⓘ



### WOOD SUPPLY CHAIN PHASES ⓘ



### VALIDATOR



VERIFIED CARBON STANDARD OUTLINE



VERRA



**GOLD STANDARD® (GS)**



# GOLD STANDARD® (GS)

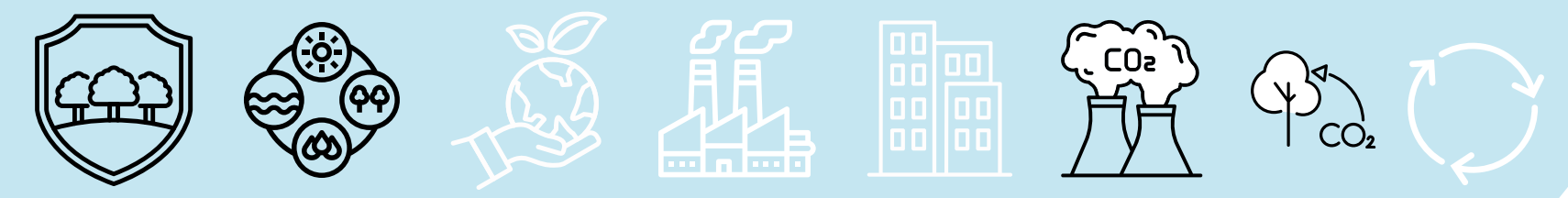


## DESCRIPTION

THE **GOLD STANDARD (GS)** IS A STANDARD THAT SETS THE REQUIREMENTS FOR IMPLEMENTING PROJECTS AIMED AT REDUCING CLIMATE-ALTERING EMISSIONS AND INCREASING CARBON SEQUESTRATION.

THE PROGRAM AIMS TO ENSURE THAT CARBON CREDITS ARE REAL AND VERIFIABLE, AND THAT PROJECTS PROVIDE MEASURABLE CONTRIBUTIONS TO SUSTAINABLE DEVELOPMENT.

## ENVIRONMENTAL BENEFITS ⓘ



## BUSINESS OBJECTIVES ⓘ



## WOOD SUPPLY CHAIN PHASES ⓘ



## VALIDATOR



WEBSITE



GOLD STANDARD



PLAN VIVO CERTIFICATE (PVC)



# PLAN VIVO CERTIFICATE (PVC)



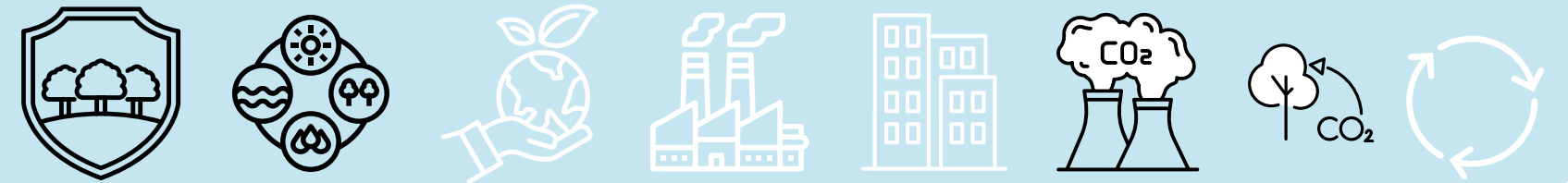
## DESCRIPTION

THE PLAN VIVO SYSTEM IS A VOLUNTARY INITIATIVE BASED ON THE SUSTAINABLE USE OF LAND BY COMMUNITIES IN DEVELOPING COUNTRIES.

PLAN VIVO PROGRAMS AND PROJECTS ENABLE LONG-TERM CARBON STORAGE, ALONG WITH OTHER LOCAL BENEFITS SUCH AS BIODIVERSITY AND POVERTY REDUCTION.

THE SYSTEM INCLUDES THE "PLAN VIVO STANDARD", WHICH SETS THE CRITERIA THAT EACH PROJECT MUST MEET IN TERMS OF CARBON, LIVELIHOODS, AND ECOSYSTEMS.

## ENVIRONMENTAL BENEFITS ⓘ



## BUSINESS OBJECTIVES ⓘ



## WOOD SUPPLY CHAIN PHASES ⓘ



## VALIDATOR



WEBSITE



GOLD STANDARD



# EU-CRCF – CERTIFICATION

## REG.(EU) 2024/3012

### CARBON REMOVAL AND CARBON FARMING

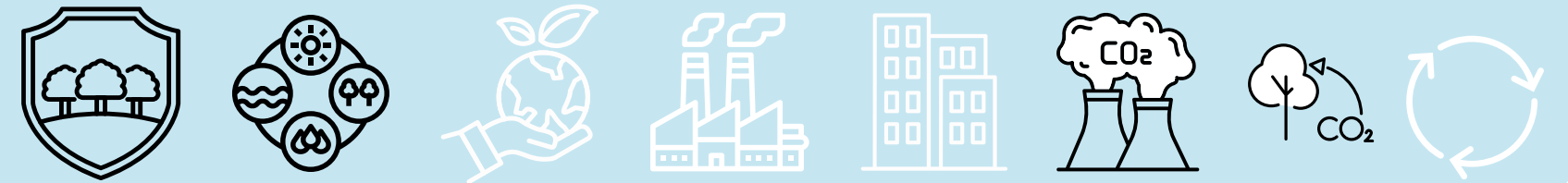


#### DESCRIPTION

THE OBJECTIVE OF THE SCHEME IS TO FACILITATE AND ENCOURAGE THE IMPLEMENTATION OF **PERMANENT CARBON REMOVALS, CARBON FARMING, AND CARBON STORAGE IN PRODUCTS** BY MANAGERS OR GROUPS OF MANAGERS, AS A COMPLEMENT TO LASTING EMISSION REDUCTIONS ACROSS ALL SECTORS, IN ORDER TO ACHIEVE EUROPEAN GOALS AND TARGETS.

THE SCHEME INCLUDES THE OBLIGATION TO DISCLOSE PERMANENT CARBON REMOVALS, CARBON FARMING, AND CARBON STORAGE IN PRODUCTS THROUGH THE CREATION OF AN **EUROPEAN UNION REGISTRY**.

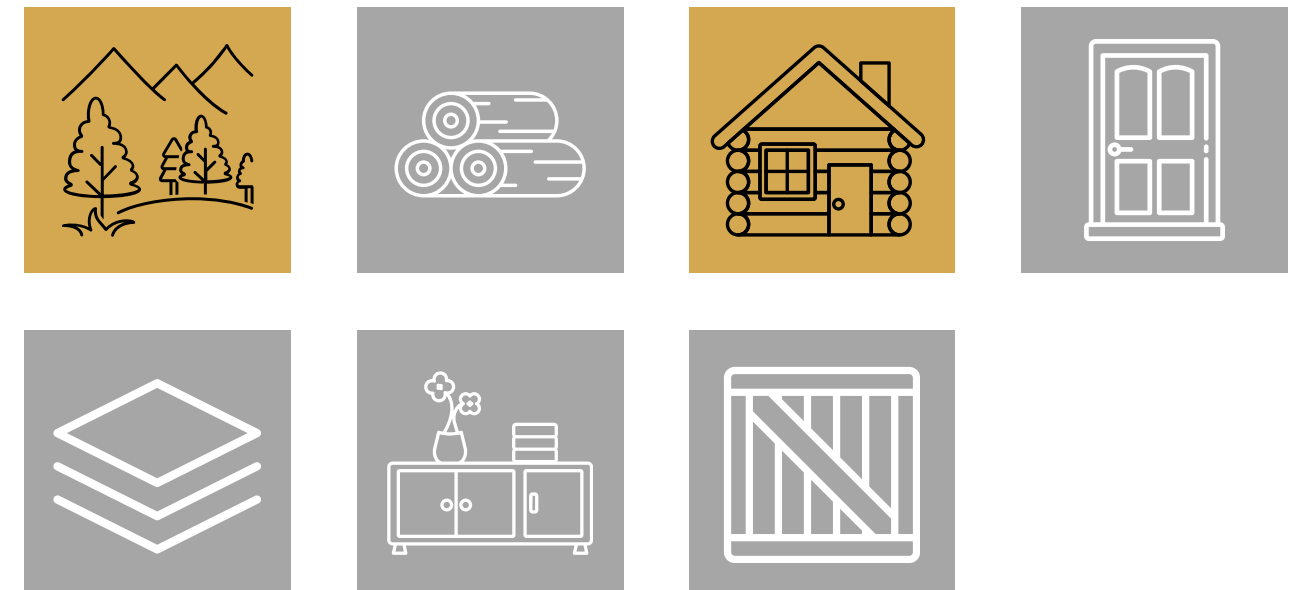
#### ENVIRONMENTAL BENEFITS ⓘ



#### BUSINESS OBJECTIVES ⓘ



#### WOOD SUPPLY CHAIN PHASES ⓘ



#### VALIDATOR



**CARBON REMOVALS AND CARBON FARMING (EU WEBSITE)**



**EUROPEAN COMMISSION DG ENERGY, CLIMATE CHANGE, ENVIRONMENT**



**REG. (EU) 2024/3012**



EU CRCF





GUIDELINES FOR MANAGEMENT OF WOOD CONSUMPTION FOR ENERGY USE



# GUIDELINES FOR MANAGEMENT OF WOOD CONSUMPTION FOR ENERGY USE

## DESCRIPTION

THE PROTOCOL AIMS TO ENHANCE THE VALUE OF **LOCAL WOOD** AND, WHEN POSSIBLE, PROMOTE ITS TRANSFORMATION INTO DURABLE, REUSABLE, AND/OR RECYCLABLE PRODUCTS AT THE END OF LIFE, ALLOWING FOR THE LONG-TERM STORAGE OF CO2

THE PROTOCOL ALSO INTENDS TO REAFFIRM THE **PRINCIPLE OF CASCADING USE OF WOOD**: THAT IS, THE USE OF WOOD ACCORDING TO THE PRINCIPLES OF THE **CIRCULAR ECONOMY**, RESERVING COMBUSTION ONLY FOR WOOD RESIDUES THAT CANNOT BE OTHERWISE UTILIZED.



THE PROTOCOL IS CURRENTLY APPLICABLE ONLY IN THE EMILIA-ROMAGNA REGION

## VALIDATOR

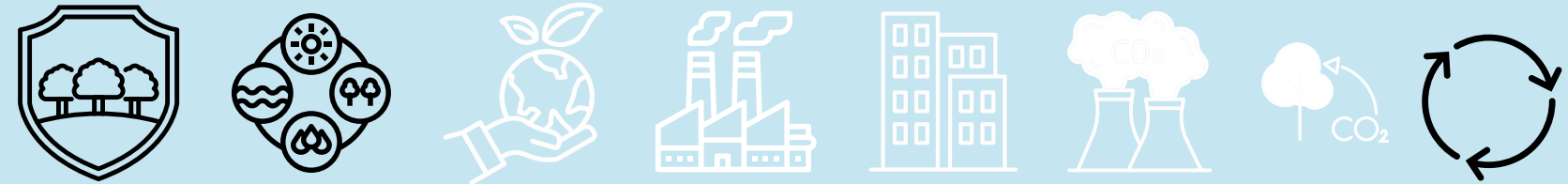


D.G.R. 1629/2022 REGIONE EMILIA-ROMAGNA



EMILIA-ROMAGNA REGION - PROTECTED AREAS, NATURA 2000 AND FORESTS

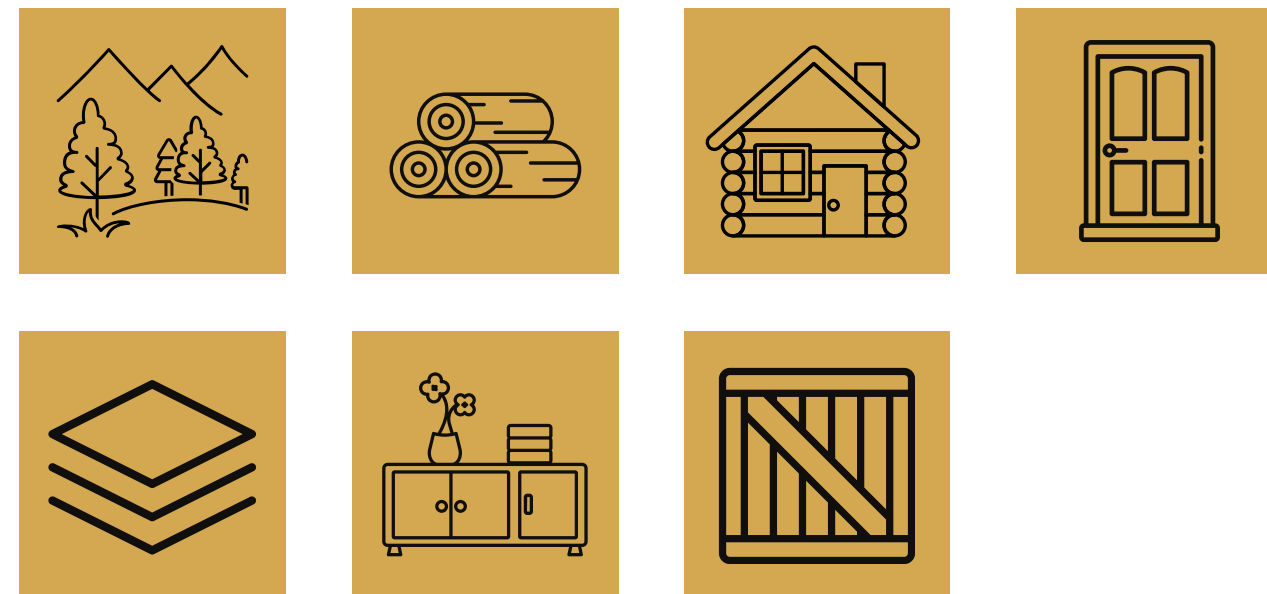
## ENVIRONMENTAL BENEFITS ⓘ



## BUSINESS OBJECTIVES ⓘ



## WOOD SUPPLY CHAIN PHASES ⓘ





# TOOLS

**SUSTAINABLE FOREST MANAGEMENT  
CERTIFICATION OF CHAIN OF CUSTODY**

PEFC CERTIFICATION  
FSC CERTIFICATION

**ECO LABELS**

ECOLABEL EU  
EPD (ENVIRONMENTAL PRODUCT DECLARATION)  
CARBON FOOTPRINT  
MADE GREEN IN ITALY  
EU-CRCF PRODUCTS  
PEFC CERTIFICATION  
FSC CERTIFICATION

**GUIDELINES FOR CASCADING USE OF  
WOOD**

**BUILDINGS ENVIRONMENTAL  
CERTIFICATION**

LEED RATING SYSTEMS  
ITACA PROTOCOL  
BREEAM

**CARBON CREDITS**

CARBON CREDIT REGISTRY - CREA  
EU-CRCF REGULATION  
VERRA-VCS  
PLANT VIVO  
GOLD STANDARD

**ENVIRONMENTAL MANAGEMENT  
SYSTEMS**

EMAS (ECO-MANAGEMENT AND AUDIT  
SCHEME)  
ISO 14001 - ENVIRONMENTAL  
MANAGEMENT SYSTEMS



*This document is a result of the LIFE BE-WoodEN project, within the activities outlined in **Work Package 4 - Innovation Lab (Task 4.1 - Innovation lab on valorization of environmental performances in the wood supply chain)**.  
(March 2025 update)*

# LIFE BE-WoodEN

Buildings and Education in Wood Ecosystem for the New European Bauhaus

Project Acronym: LIFE23-PRE-IT-LIFE BE-WoodEN

Co-funded by the European Union. Views and opinions expressed are however those of the author(s) only and do not necessarily reflect those of the European Union or CINEA. Neither the European Union nor the granting authority can be held responsible for them.

**<https://lifebewooden.unige.it>**

Project Leader



**Università  
di Genova**

**DAD DIPARTIMENTO  
ARCHITETTURA E DESIGN**

Project Partners



REGIONE LIGURIA



**ART-ER**  
ATTRATTIVITÀ  
RICERCA  
TERRITORIO



UNIVERSITÀ  
DEGLI STUDI  
FIRENZE  
**DAGRI**  
DIPARTIMENTO DI SCIENZE  
TECNOLOGICHE, AGRARIE,  
ALIMENTARI, AMBIENTALI E FORESTALI



**FLA**  
FEDERLEGNOARREDO



**HOUSING  
EUROPE**



UNIVERSITÀ DEL PIEMONTE  
ORIENTALE  
UNIVERZA NA



Politechnika  
Wroclawska